



BESPOKE ACCESS SOLUTIONS

BESPOKE STEEL ACCESS COVERS ▾ METALWORKS
▾ HEADWALL & ACCESS CHAMBER PRODUCTS

CATALOGUE ▾ 2024



MAKE EVERY DAY BETTER

At Wrekin, we're not just in the business of creating road ironwork, access covers, custom steel solutions, and cutting-edge geosynthetic products – we're in the business of transforming the world beneath our feet.

Our journey is marked by innovation and an unwavering dedication to excellence. It's what has propelled us to the forefront of the civil engineering landscape, especially when it comes to critical safety solutions.

With over four decades of technical mastery and leadership, we've cultivated a remarkable array of patented products that cater perfectly to both specifiers and contractors.



Our roots run deep in the world of highway ironwork. Our core mission? Crafting, manufacturing, and supplying the finest gully grates and manhole covers on the market. They're rugged and built to withstand the ever-growing demands placed on our roads and infrastructure. We take great pride in our partnerships with prominent water and telecommunication utilities across the UK, ensuring that motorists, pedestrians, and travellers can embark on safe, smooth, and top-quality journeys.

We're here to make the world beneath our feet a safer, more efficient, and sustainable place.

OUR VALUES



Responsive

We see the opportunities before others do and take the initiative.



Straightforward

We ensure we are uncomplicated, easy to deal with and understand.



Curious

We are always looking for new ways of thinking and exploring new ideas.



Experts

We figure out the best way to deliver the most productive solutions.



Collaborators

We connect and create with others, treating them fairly and respectfully.



Trusted

We ensure reliability, take responsibility, and strive to do the right thing.



Accountable

We learn and improve upon our processes to deliver results and value.

BETTER TOGETHER



CIVITEC GROUP

We are all better together, working collaboratively to achieve common goals.

That's why we've built Civitec Group, which brings together leading brands of civil engineering solutions providers with a shared ambition.

Our collective expertise spans across various aspects of civil engineering, from the design and manufacture of innovative products, to providing solutions to long standing problems through a specification approach.



We are not just a group of companies; we are a united force, striving to revolutionise the industry and contribute to the development of sustainable and resilient infrastructure.





Civitec Group's strength lies in our diversity.

Each member brand brings a unique perspective and specialised skills, enhancing our ability to solve complex problems and deliver comprehensive solutions. Our portfolio includes projects in transportation, water management, environmental engineering, and urban development. From supporting the design of smart cities through to mitigating climate change impacts, our work is shaping the future of civil engineering.

We are also deeply committed to fostering innovation. Our research and development teams continually explore new technologies and methodologies to improve efficiency and sustainability. We believe in harnessing the power of digital transformation to streamline processes, reduce waste, and increase productivity. Artificial intelligence, machine learning, and data analytics are just a few of the tools we employ to drive progress.

At Civitec Group, we understand that our people are our greatest asset. We invest heavily in talent development, providing our employees with opportunities for continuous learning and growth. Our inclusive work culture promotes collaboration, encourages creativity, and rewards excellence.

Civitec Group's mission is to redefine the boundaries of civil engineering, to create a world where infrastructure is smart, sustainable, and resilient. Our shared ambition fuels our drive for excellence, propelling us towards our vision of a better tomorrow.

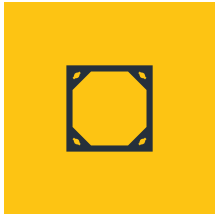
BESPOKE STEEL SOLUTIONS



We offer a comprehensive range of bespoke steel solutions including installation services. We work with you to understand your project requirements and are happy to provide free of charge site surveys along with bespoke CAD design services where required.

Our bespoke steel solutions include the design, fabrication, and installation of various steel structures and components. We offer a robust range of bespoke steel options that give you a solution for every scenario.

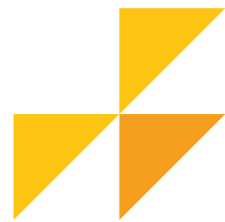




BESPOKE STEEL

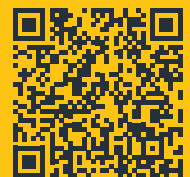
CONTENTS

▶	Metalworks package	11
▶	Headwall & chamber products	19
▶	Bespoke access covers	33
▶	Recessed access covers	34
▶	Solid top access covers	44
▶	Accessories	55



FOR THE LATEST DATA

Visit wrekinproducts.com for the very latest information on our entire range of products. Access the latest datasheets, guides, videos and more. All fully searchable, at your fingertips.



[wrek.in](https://wrekin.in)



CHOOSING THE RIGHT STEEL COVER

Although BS EN 124 does cover manhole tops manufactured from a variety of materials including steel, it is argued that some test procedures are inappropriate for steel.

Low risk applications don't necessarily require full BS EN 124 test protocols and associated costs, where the adaptable nature of steel fabrications can provide a safe alternative.

In addition, steel fabrication is a highly flexible process allowing all sorts of non-standard sizes and designs that are not covered by BS EN 124.

As a consequence, the industry in the UK uses a number of definitions of loading categorisation that can be confusing. Some are historical descriptions while others are descriptions based on the gross laden weight of a vehicle or individual wheel loads. There can be conflicting definitions of exactly what the descriptions mean and how the access cover will perform.

In an attempt to apply some logic and give guidance to users the Fabricated Access Covers Association (FACTA), of which Wrekin is a member, has produced definitions and loading categorisations in the form of classes for fabricated covers but not pressed tops.

In addition many of the historical loading descriptions still persist, so using our 30 years experience and technical knowledge, Wrekin have produced a guide to load categorisations and the correct choice of Wrekin product.









KEY POINTS

Where steel products are suitable for use in vehicle situations they are designed for slow moving traffic applications only. They must never be used in highways or any other area of fast moving traffic.

Access covers manufactured from pressed steel are recommended only for areas of low intensity traffic.

None of the loading categorisations can be directly compared to BS EN 124.



Load duty		Historical description	Slow moving wheel load (SMWL)		FACTA Class	EN124
		Gross laden vehicle weight (GLVW)	Pneumatic tyres	Solid tyres	(for comparison)	
	Pedestrian	Often described as 2.5tn	N/A	N/A	A	A15
	Domestic light duty	5t	1.5t	0.25t	AA	N/A
	Light / medium duty	10t	2.5t	0.5t	AAA	N/A
	Light / medium duty	17t	4.25t	0.5t	AAA	N/A
	Medium duty	25t	5t	0.75t	B	B125
	Medium / heavy duty	38t	6.5t	1.5t	C	C250
	Heavy duty	44t	11.5t	3t	D	D400
	Fork-lift / docks	Special application vehicles	16t	5t	E	E600

KEY TERMINOLOGY

Clear Opening

The hole dimensions of the chamber or the aperture within the product frame (when the cover is removed).

Over Top of Frame

The external dimensions of the top of the frame.

Overall size

The external dimensions of the frame including any fixing flange or lugs.

GLVW

Gross Laden Vehicle Weight (the total weight of a vehicle).

SMWL

Slow Moving Wheel Load (the weight applied by one wheel of a vehicle).

Keyway Blanking Plugs

Accessory which will cover the lifting key slots to prevent a potential trip hazard.

Twin Covers

Two covers in a single frame.

SQR or Square to Round

A circular clear opening within a square frame allowing correct seating on a circular chamber.

Reinforcing bars in recess

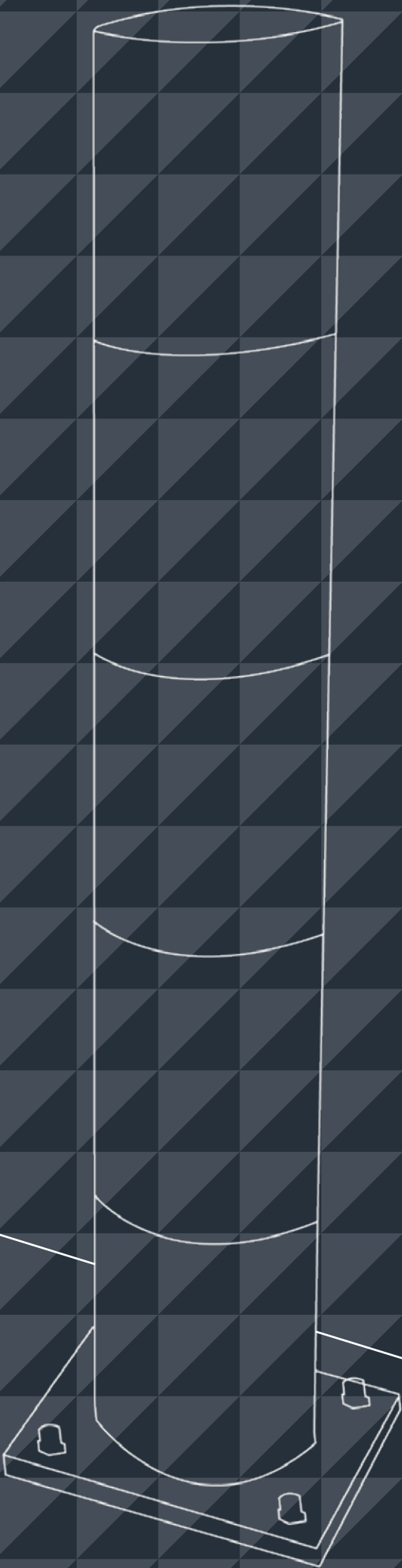
A mesh or series of bars in the tray base to better secure concrete infill.

Labyrinth Seal

A metal seal (sometimes used in conjunction with neoprene seals) to affect an ingress resistant / odour egress resistant seal. Can be used on its own or with grease.

Slide Out

A feature allowing easy removal of block paving infill covers.





STEEL ACCESS SOLUTIONS

METALWORKS PACKAGE

Our metalworks package for commercial and industrial buildings features a comprehensive service; from design and manufacture, right through to installation of site specific metalworks.

▶	Solutions for commercial & retail	
▶	Stainless steel bollards	14
▶	EV charging protection	15
▶	Cycle parking solutions	15
▶	Armco barriers	15
▶	Solutions for utilities	
▶	Handrails & balustrades	16
▶	Access & escape stairs	17





STEEL ACCESS SOLUTIONS

METALWORKS PACKAGE

Our metalworks package for commercial and industrial buildings features a comprehensive service; from design and manufacture, right through to installation of site specific metalworks.

The expanded offerings encompass comprehensive metalworks packages tailored for commercial and industrial developments. Our end-to-end service spans the entire process, from design to precision manufacturing and seamless on-site installation of site-specific metalworks.

With over four decades of experience delivering exceptional metalworks and fabrication projects across the UK, our in-house CAD team and fabrication workshop equip us for competitive delivery. We stand ready to collaborate with you, ensuring timely and budget-conscious delivery.

DID YOU KNOW?...

We are accredited to **Constructionline Gold**, and possess all industry site operative certifications for related works. We ensure we comply with the highest standards in all of our services.



Constructionline
Gold Member



For additional information regarding our comprehensive range of metalworks products, please reach out directly to our dedicated specialist team on **01543 440 433**



SOLUTIONS FOR COMMERCIAL & RETAIL

Enhancing commercial and retail spaces. From tailored design to installation, transforming spaces with safety, functionality, and aesthetics

Our range of products are aligned with the requirements of Commercial and Retail developments. Providing health and safety criteria's are met, protecting infrastructure and assets, along with aesthetically enhancing sites for all uses. We can provide full design, manufacture, and installation services across your site.



STAINLESS STEEL BOLLARDS

Bollards serve not only as practical safety measures but also impact the aesthetic value of a site. By providing clear demarcation, they guide and protect people and vehicles. The design of bollards can be tailored to complement the architectural style and landscape of your projects, enhancing the visual appeal of the environment.

HGV SERVICE YARD BOLLARDS

HGV Service yard bollards are essential for ensuring demarcation to protect people, buildings, and vehicles. Providing highly visible points to operatives. Available in a variety of sizes and finishes, we can provide any installed solution.



EV CHARGING PROTECTION

EV charging point protection, focusing on safeguarding both people and infrastructure, is becoming increasingly crucial as electric vehicles (EVs) continue to become an ever increasing requirement for today's and future developments.

By protecting the physical infrastructure that supports EVs, cities and organisations can facilitate a smoother transition to electric mobility, ensuring that the shift towards greener transport does not compromise safety.



CYCLE PARKING SOLUTIONS

By providing secure and accessible parking for bicycles, organisations can demonstrate their commitment to sustainability, enhancing their appeal to environmentally conscious individuals.

In addition, cycle parking helps sites achieve a greener footprint, aligning with broader environmental goals. By providing secure and accessible parking for bicycles, organisations can demonstrate their commitment to sustainability. This initiative not only benefits the environment but also fosters a community spirit centred around healthy living and environmental responsibility.



ARMCO BARRIERS

Armco barriers offer robust protection for both people and buildings against the potential hazards of vehicular impact.

Constructed from high-grade steel, barriers are engineered to absorb and dissipate the force of collisions, significantly reducing the risk of injury to pedestrians and damage to structures.

Beyond their functional benefits, Armco barriers can be customised with various finishes, ensuring they integrate with their surroundings.





SOLUTIONS FOR UTILITIES

We have over 30 years experience in the design and manufacture of specialist fabricated products for the utilities sector. Our innovative approach to design & manufacture allow us to offer solutions for any size, in any location.

Our bespoke steel solutions include the design, fabrication, and installation of various steel structures and components. We offer a comprehensive range of bespoke steel products that give you a solution for every scenario.

We work with you to understand your project requirements and are happy to provide site surveys along with bespoke CAD design services where required.

HANDRAILS & BALUSTRADES

Handrails and balustrades play a critical role in ensuring the safety of staff and site operatives, providing essential fall arrest protection in various work environments such as platforms, staircases, and mezzanines

The installation of handrails and balustrades is a fundamental aspect of compliance with workplace health and safety regulations, highlighting an organisation's commitment to creating a secure working environment. Their presence not only safeguards employees but also underscores the importance of prioritising worker welfare in the design and maintenance of facilities. By integrating these protective measures, businesses can significantly reduce the risk of workplace injuries, fostering a culture of safety and vigilance.

MATERIAL OPTIONS

- ▶ GMS
- ▶ Stainless Steel
- ▶ Cast Iron
- ▶ GRP





ACCESS & ESCAPE STAIRS

Access and escape stairs are a fundamental component in meeting the health and safety requirements of any site, providing a vital means of egress during emergencies.

Designed to facilitate quick and orderly evacuation, their incorporation into the architectural plan underscores a commitment to prioritising the well-being of individuals on site. By ensuring a clear and unobstructed path to safety, escape stairs play a crucial role in emergency preparedness. Significantly reducing the risk of injury or fatalities during unforeseen events, their presence is a testament to a site's adherence to high safety standards.

MATERIAL OPTIONS

- ▶ GMS
- ▶ Stainless Steel
- ▶ GRP



THE ONLINE HOME OF WREKIN WREKINPRODUCTS.COM

We pride ourselves on ensuring our website is an easy and accessible place to get everything you need from Wrekin.

We are always working on new features of our website to make finding the information you need as easy and fast as possible.

Access the very latest datasheets, guides, videos and more, on our entire range of products is all fully searchable, at your fingertips.



Scan here to visit

wrek.in



Knowledge Base

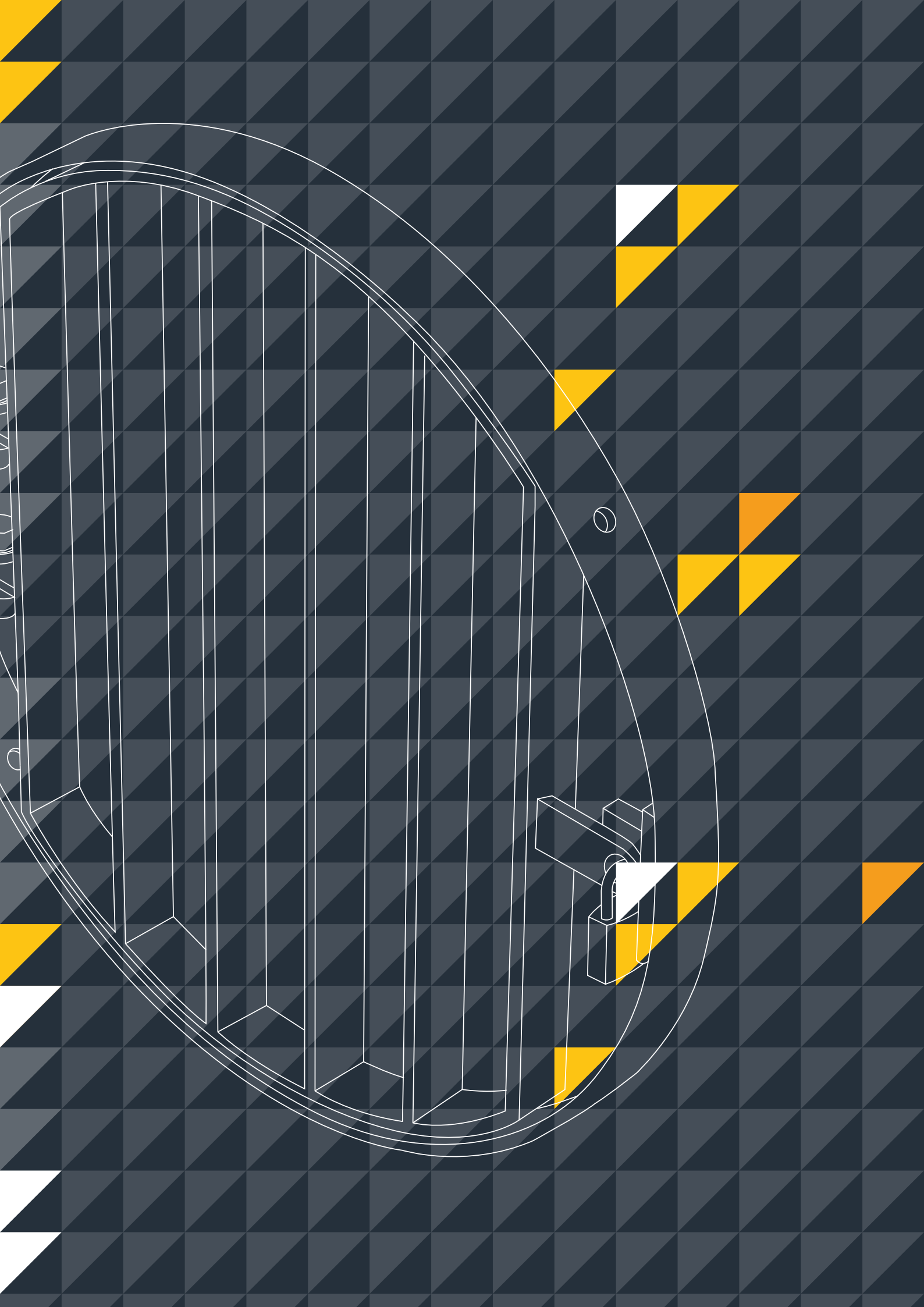
We've designed our new Knowledge Base to provide comprehensive support and resources to help you succeed with our products. Our learning area includes frequently asked questions (FAQs), installation guides, product guidance, and regulatory information, all in one convenient location.

Product Data

Get the latest, up-to-date product information, in an easy to search, easy to navigate layout. Get essential datasheets, product images and dimensions, guides, videos and more.

Technical Support

We have developed a strong reputation in the civil engineering sector thanks to our skilled teams wealth of experience. Our website contains a huge number of articles, opinion pieces and how-to's in our technical centre, so they're always on hand when you need them.












HEADWALL & ACCESS CHAMBER PRODUCTS

CONTENTS

Our headwall and access chamber range seamlessly integrates with any civil engineering project. Our access chambers are known for their durability and user-friendly design, providing secure and efficient entry to underground networks, helping you build a reliable foundation below ground level.

Headwall & access chamber products	
	Access covers & gratings 22
	Safety grilles, signage & chains 24
	Composite modular ladders 27
	Landings & platforms 28
	Handrails & railings 29
	Raked gratings & trash screens 30
	SfA grilles 31





HEADWALLS AND ACCESS CHAMBER PRODUCTS

We offer a comprehensive range of headwall and access chamber products

Our access chamber range seamlessly integrates with any civil engineering project. Our access chambers are known for their durability and user-friendly design, providing secure and efficient entry to underground networks, helping you build a reliable foundation below ground level.

As an alternative to hot dip galvanising products can be supplied stainless steel. We offer site surveys and CAD design services where required.



For additional information regarding our comprehensive range of headwall products, please reach out directly to our dedicated specialist team by calling **01543 440 440**

ACCESS COVERS & GRATINGS

DUCTILE IRON RANGES

Exciting new major road building and improvement projects are taking place throughout the UK, linking up our regions and supporting economic growth.

Investment is being made to remedy our infrastructure and to tackle the congestion in our cities, towns & villages and we are well positioned to offer unique solutions and innovations needed to spearhead the way.

MANHOLE COVERS AND GULLY GRATES

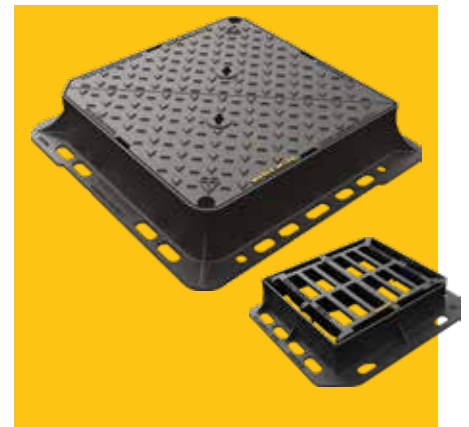
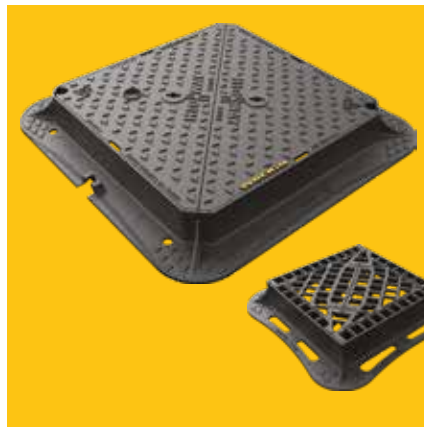
Manhole covers and gully grates are safety critical. With this in mind, we have developed products which incorporate features that help eliminate failure mechanisms, minimising safety issues and optimising whole life cost.

The vast majority of our manhole covers are manufactured from heavy-duty ductile iron, offering durable strength and long-standing performance.

Our extensive ranges include single, double, and triple rectangular, round and square to round manhole covers, including popular and less common sizes.

Many of our products are certified by BSI to BS EN 124 and conform with CD 534, as well as other industry specifications, they also carry the Kitemark, meaning our products offer a trusted solution.

Scan to see the full ductile iron range online



UNITE

Unite is simply the best performing manhole cover and gully grate range on the market. Packed with features which combine to give Unite the longest life and the lowest whole life cost of any UK manhole cover in its class.



wrek.in/unite

HIGHWAY

Highway is our most versatile range of manhole covers and gully grates, with a solution for every scenario, including the most complex projects. Its vast variety of options makes it the most extensive range of robust highway ironwork available in the UK.



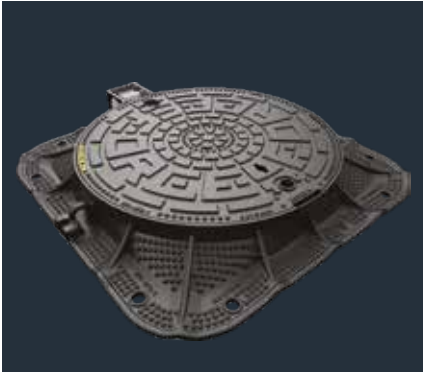
wrek.in/highway

TRISTAR

Our high-quality and compliant Tristar manhole covers, gully grates and surface boxes offer a competitive solution for groundworkers and specifiers. Ever popular, the Tristar range is the best-selling ductile ironwork range of products in the UK.



wrek.in/tristar

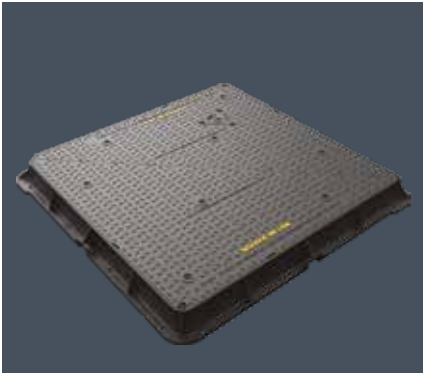


FORCE

Based on our premium Unite range, Force is the most mortar-sympathetic circular, hinged range of manhole covers available. The hinge utilises our unique anti-debris design, reducing build-up of dirt, ensuring a simple and easy lift every time.



wrek.in/force

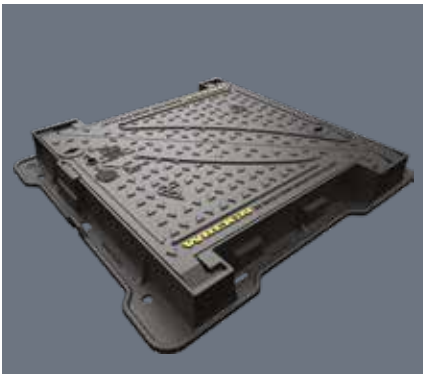


HERCULES

The ideal solution for scenarios that require extra-large D400, Group 4 manhole covers. Manufactured to BS EN 124 together with CD534-compliant skid resistance for high risk locations, Hercules offers a cost effective alternative to large-fabricated steel solutions.



wrek.in/hercules

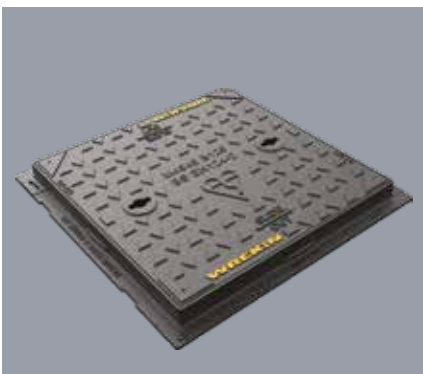


VAULT

Vault access covers are commonly used on motorways to secure valuable communication assets. Designed to meet the requirements of CD 534, the Vault range exceeds BS EN 124:2015 D400 requirements and includes a unique hinge system which fixes the covers in an upright position for safe and simple operation.



wrek.in/vault

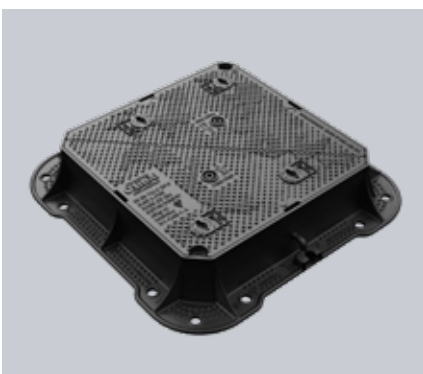


SAFESEAL

Safeseal manhole covers have been designed to combine high strength & light weight, and all incorporate a single labyrinth seal, helping to prevent odour escapes and water ingress. The range have been designed for use in load classes A15, B125 and C250.



wrek.in/safeseal



CARGO

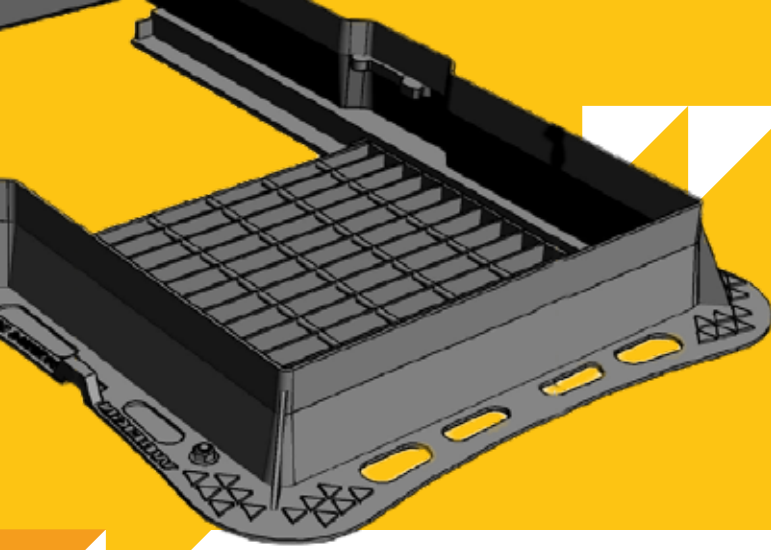
Introducing Cargo, designed for F900 load class applications like airports and docks. With an anti-slip surface and corrosion-resistant coating, Cargo ensures safety and durability. Easy to install and maintain, it sets a new standard for heavy-duty infrastructure.



wrek.in/cargo

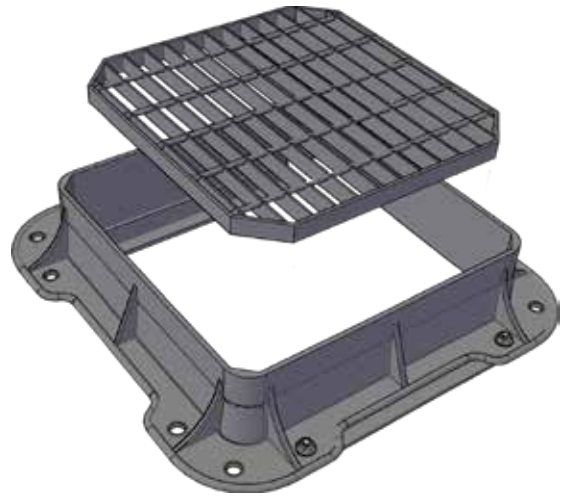
SAFETY GRILLES

Our safety grilles are commonly supplied as an accessory for ductile iron D400 products within the Highway range, ensuring each unit is fully assembled in-house for quality assurance.



DROP IN BAR

Designed to prevent people and large items from falling into the chamber. The maximum bar spacing will prevent a 100 mm diameter ball from passing through the grid. For emergency fall prevention situations only, not to be walked on or used as a working platform.



DROP IN MESH

Superior grille, designed to prevent people and small items from falling into the chamber. Holes can be added in positions to give access to spindles, allowing the operation of valves without the removal of the grille. Hinged peepholes are available to give safe access for sampling without the removal of the main grille.

HINGED PUMP THROUGH

These are specialist grids used during the removal of pumps from wet wells. The grids are automatically opened by the action of the rising pump as it is extracted from the chamber, once the pump is clear the grids drop back into the closed position. This automatic action prevents operatives being exposed to an open chamber. It is crucial that the split in the grids aligns with the centre line of the pump & rails (dimensions must be supplied by contractor). These are available in bar or mesh options.



These accessories can be retrofitted when accompanied by an additional bolt-on chamber support frame, enhancing flexibility in application. Adhering to the highest standards, they are hot dipped galvanised according to BS EN ISO1461, guaranteeing durability and longevity. All grids are available to be supplied with; locking screws, padlock facilities, and warning signs tailored to customer specifications, alongside bespoke access points for equipment and a safety chain to prevent loss or omission.



HINGED MESH

Our hinged mesh grille prevents people and small items from falling into the chamber. Similar to the drop-in mesh, holes and hinged peepholes can be added for greater access options. This variant can be provided with a 'lock out' to retain the grid in an open position or be fitted with a padlock facility to prevent unauthorised access.

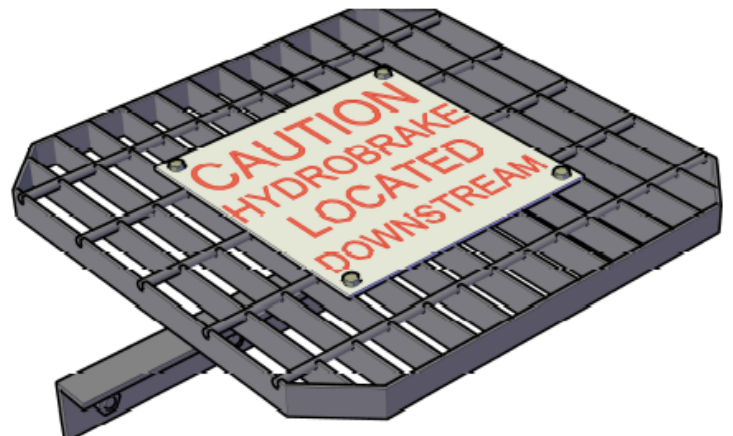


HINGED BAR

Our hinged bar grille option prevents people and large items from falling into the chamber. The maximum bar spacing will prevent a 100 mm diameter ball from passing through the grille. These are used for emergency fall prevention situations only and are not to be walked on or used as a working platform. Can be provided with a 'lock out' to retain the grid in an open position. Sometimes used as an extension to a chamber access ladder, providing safer entry and exit. Can be fitted with padlock facility to prevent unauthorised access

RETRO-FIT

All grid styles are available for retro-fitting but need to be supplied with the necessary bolt on chamber support rails. Accurate clear opening dimensions are critical to ensure successful on-site fitting. Whenever possible obtain a photograph of the chamber prior to ordering.





SAFETY SIGNS & CHAINS

Our safety signage and chains, providing clear hazard warnings with options for customisation in colours, sizes, and text, ensuring operator safety while accessing chambers.

Additionally, their safety chains, designed for outgoing pipes to prevent operatives from being carried downstream, are customisable, detachable, and meet specifications by The Highways Agency and Sewers for Adoption, with all components made from stainless steel.



SIGNAGE

Warnings regarding hazards within the chamber are generally attached to safety grids which sit below the main access cover. This gives clear safety information or warnings to the operator whilst the chamber is still protected by the grid. These signs are generally black text on a yellow background; however our signs can be produced in a variety of colours, sizes and texts to suit customer requirements.

Popular examples include: 'HYDROBRAKE LOCATED HERE' or 'HYDROBRAKE UPSTREAM', commonly supplied in red text on a white background.

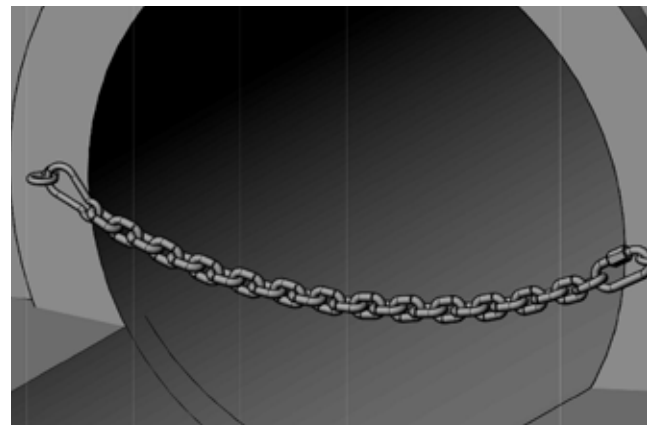
Where safety grids are not required, signage can be attached to the chamber walls with removable chain

SAFETY CHAINS

Safety chains are often provided on outgoing pipes where there is a potential for an operative to be carried downstream, into the pipe. Chains hang loosely across the pipe providing a grab point in an emergency.

These are available as a single or double row for large pipe diameters and can be detached from the wall if access to the pipe is required.

Specified by The Highways Agency and Sewers for Adoption, the two specifications differ slightly but the principle is the same. All components are stainless steel.





COMPOSITE MODULAR LADDERS

FOR FOUL, STORM AND POTABLE WATER APPLICATIONS

Our lightweight and durable composite ladders are fabricated from reinforced thermoplastic. Whilst all of our composite ladders have excellent chemical resistance, our grey and black ladders are for potable and stormwater. Yellow ladders are appropriate for contact with sewage. The range utilises a modular system, which has a much lower whole life cost than ladders manufactured in galvanised and stainless-steel materials.

View the installation guide here



USED IN INSTALLATIONS FOR:



Available Options:

- ▶ Three colour choices, suitable for different applications
- ▶ Bespoke ladder lengths can be manufactured to clients specifications
- ▶ Pair of Rigid Stays
- ▶ Pair of Swivel Stays
- ▶ Workshop assembly if required

Key Attributes:

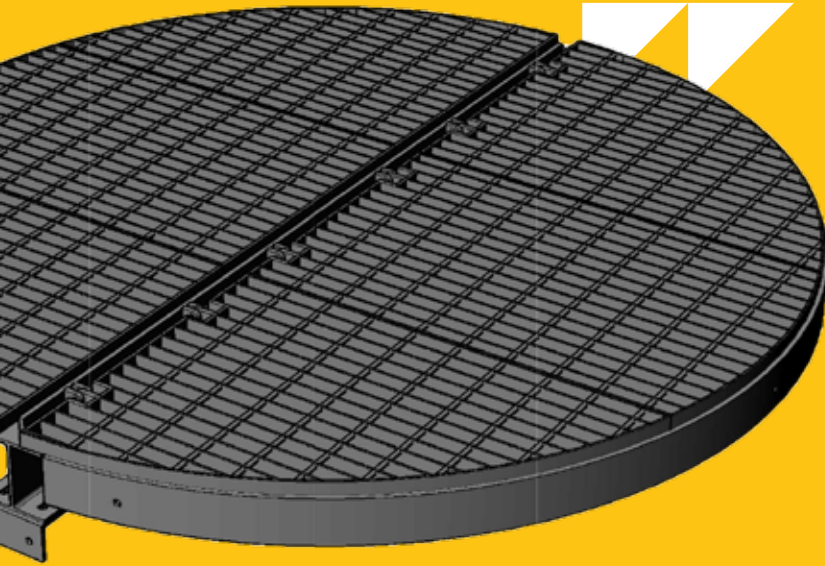
- ✓ Compliant with BS14396
- ✓ Installation level - Simple
- ✓ Complies with standard CE marking regulations
- ✓ Fabricated from reinforced thermoplastic made in the UK to ISO9001 quality standards fully tested to BS 14396 by Lloyds British PLC
- ✓ Site assembly

APPLICATIONS

- ▶ Manhole chambers
- ▶ Well chambers
- ▶ Pumpshafts
- ▶ Combined sewer
- ▶ Overflows

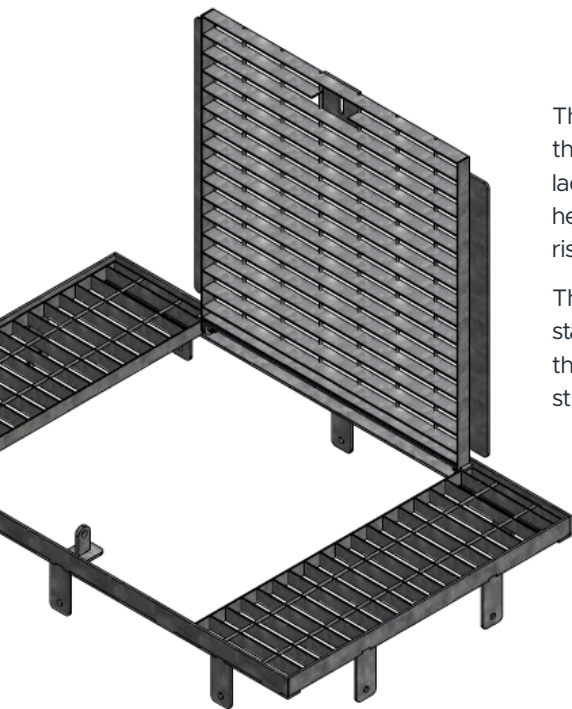
STOCK CODE	LADDER LENGTH (mm)	STRINGERS (mm)	RUNGS (mm)	LADDER WIDTH (mm)
C2L/LADDER/3000/CG	3,000	72 x 32	Ø 30 x 300 Centres	435
C2L/LADDER/3000/CY	3,000	72 x 32	Ø 30 x 300 Centres	435
C2L/LADDER/3000/CB	3,000	72 x 32	Ø 30 x 300 Centres	435
C2L/LADDER/600/CG	600	72 x 32	Ø 30 x 300 Centres	435
C2L/LADDER/600/CY	600	72 x 32	Ø 30 x 300 Centres	435
C2L/LADDER/600/CB	600	72 x 32	Ø 30 x 300 Centres	435
C2L/LADDER/300/CG	300	72 x 32	Ø 30 x 300 Centres	435
C2L/LADDER/300/CY	300	72 x 32	Ø 30 x 300 Centres	435
C2L/LADDER/300/CB	300	72 x 32	Ø 30 x 300 Centres	435
C2L/LADDER/RS/CG	NA	RIGID STAY	NA	NA
C2L/LADDER/SS/CG	NA	SWIVEL STAY	NA	NA

LANDINGS & PLATFORMS



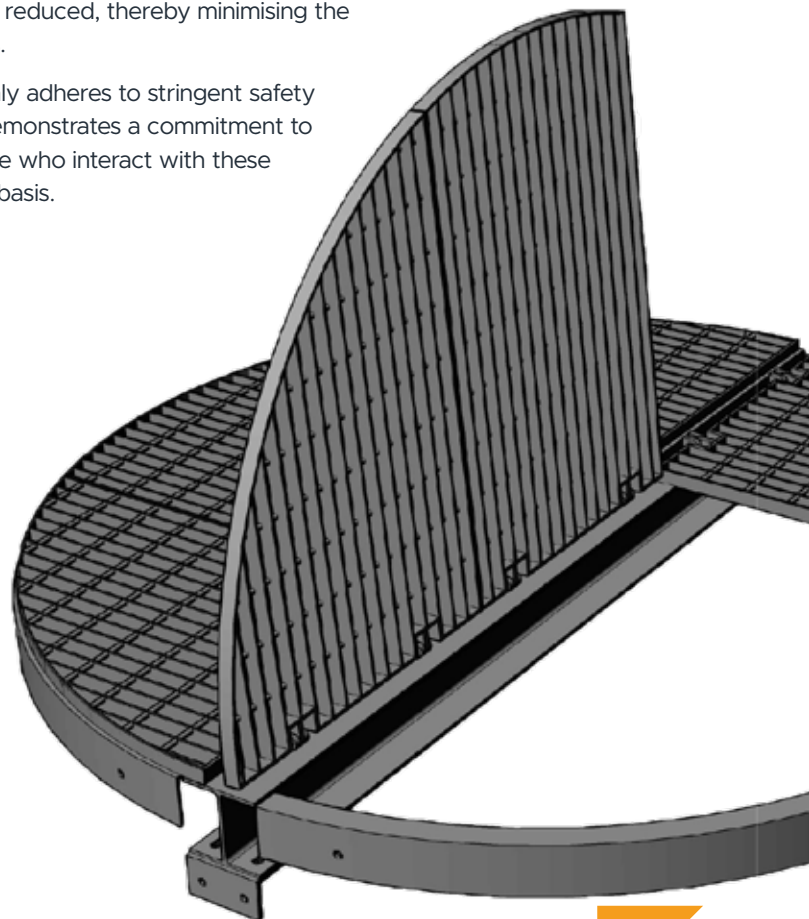
A landing platform not only facilitates a secure transition from ladder or step rungs into the chamber base or intermediate level but also significantly enhances safety and accessibility within the chamber.

The design, featuring a split and hinged grating, allows for effortless and safe access to both halves of the chamber, crucial for maintenance tasks such as rodding and inspections. This feature ensures that operatives can perform their duties without compromising on safety or efficiency.



The use of a series of platforms alongside shorter, offset ladders mitigates the risks associated with a direct descent. By breaking up the ladder drop into manageable sections, the potential fall height is substantially reduced, thereby minimising the risk of serious injuries.

This approach not only adheres to stringent safety standards but also demonstrates a commitment to the wellbeing of those who interact with these structures on a daily basis.



We can offer internal or external gratings & landing platforms, designed to suit individual customer requirements. Site surveys can also be undertaken by our expert teams.

Material Options

- ▶ Galvanised mild steel
- ▶ Stainless steel
- ▶ GRP





HANDRAILS & RAILINGS

In many environments, the installation of handrail systems is a highly beneficial safety enhancement. These systems are designed to provide surface protection around access openings and at ladder exit points within the chamber, significantly reducing the risk of accidents and injuries.

The ability to incorporate surface rails as an integral component of a bespoke steel access cover system demonstrates the adaptability of these safety features, allowing for a seamless integration with existing infrastructure.

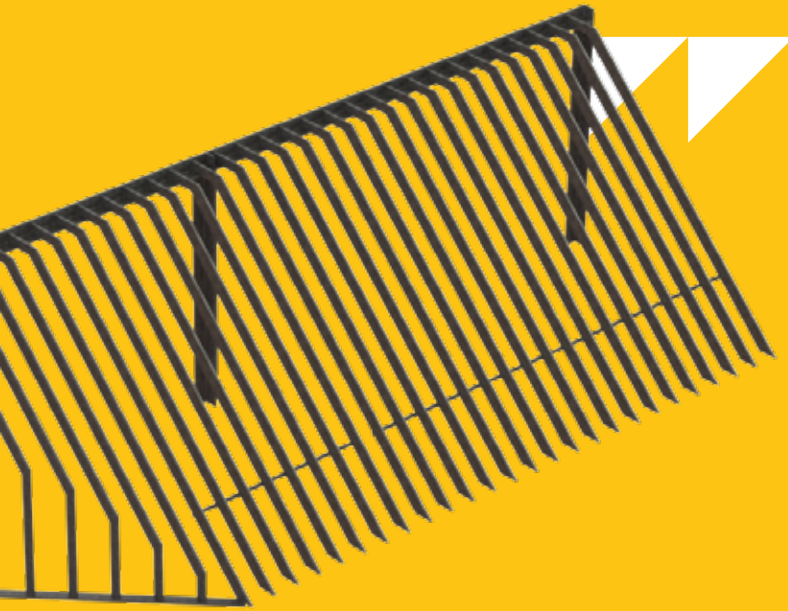
The inclusion of gates and removable sections within the handrail system offers another layer of practicality, facilitating unobstructed access to pipes and other critical infrastructure components when necessary. This flexibility is crucial for maintenance and inspection routines, ensuring that essential tasks can be performed efficiently and safely.

Adhering to safety standards, the minimum handrail height is set at 1100 mm, a specification designed to provide adequate protection for a wide range of users.



The system's versatility is further demonstrated through the availability of various floor mounting options, including vertical, horizontal, and cast-in patterns. This ensures that the handrail system can be adapted to suit a diverse array of chamber configurations and installation requirements.

Materials play a key role in the durability and performance of handrail systems. Typically supplied in galvanised mild steel for its robustness and resistance to corrosion, options for stainless steel and glass reinforced plastic (GRP) are also available, catering to specific environmental conditions or aesthetic preferences.



RAKED GRATINGS & TRASH SCREENS

This range of gratings and trash screens are often based upon customer designs to suit virtually any location.

Site visits are undertaken to establish the customers exact requirements, and from that a design can be produced. Once approved, it can then be manufactured and installed by our site team, if required.

Available Options

- ▶ Hinged sections
- ▶ Access doors
- ▶ Profiled bars
- ▶ Walk on areas to assist in trash raking.

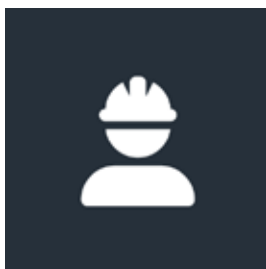


Our bespoke range of gratings and screens are designed and made to meet the specific needs of each customer, ensuring a perfect fit for any site.

Our design approach is underpinned by our customer support and technical expertise throughout the life cycle of a project. We collaborate with asset owners, developers, main contractors, ground workers, and local authorities to ensure that every project benefits from our wealth of experience.



END TO END INSTALLATION



Site Visit

Our skilled team conducts a comprehensive site visit to understand your requirements.



CAD design

A CAD design is then completed by our team to ensure accuracy and efficiency.



Installation

Our experienced site team will then undertake the manufacturing and installation processes.

SEWERS FOR ADOPTION GRILLES

Safety grilles are a critical requirement for any outfall with a pipe opening of 350mm or more, ensuring the protection and safety of both the public and the environment.

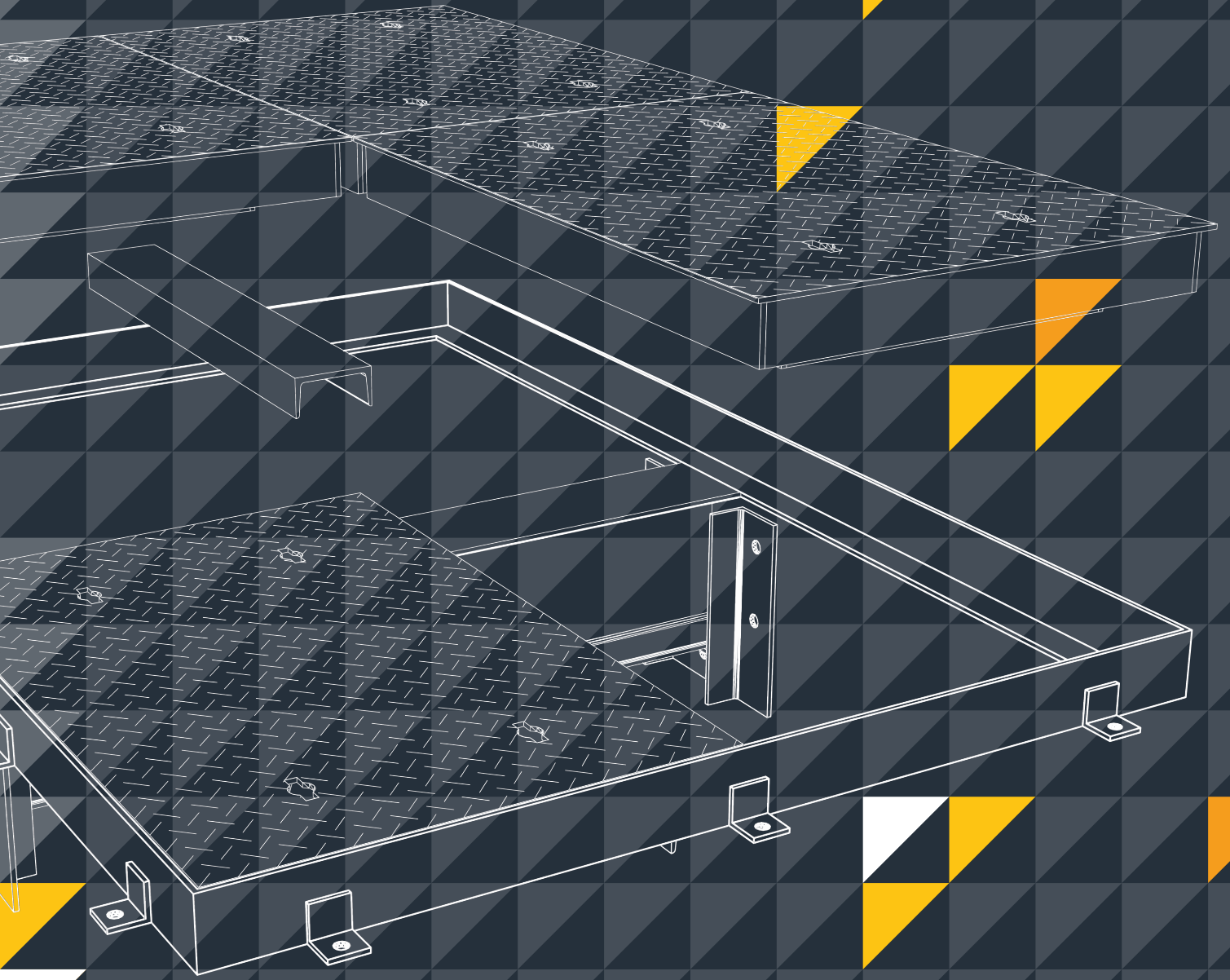
Designed to prevent accidental entry while allowing for efficient water flow, they are 270mm wider than the outside diameter of the pipe and feature flat bars at 100mm spacing

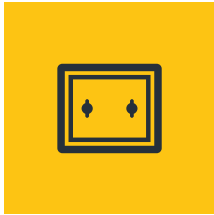


Adhering to the "Sewers for Adoption" guidelines, safety grilles are a critical requirement for any outfall with a pipe opening of 350mm or more, ensuring the protection and safety of both the public and the environment. These grilles, being 270mm wider than the outside diameter of the pipe and featuring flat bars at 100mm spacing, are designed to prevent accidental entry while allowing for efficient water flow.

The addition of a hinged design and a padlock facility enhances both the security and maintenance capabilities of these installations. It's essential that these specifications, including dimensions and safety features, are meticulously followed to comply with the stringent standards set forth by Sewerage Undertakers in England and Wales. This compliance not only ensures the safety and functionality of the sewer systems but also facilitates their adoption under Section 104 of the Water Industry Act 1991. By meeting these requirements, developers and contractors can contribute to the creation of safe, efficient, and sustainable sewerage systems, aligning with the overarching goals of public health and environmental protection.







BESPOKE ACCESS COVERS

CONTENTS

We have over 30 years experience in the design and manufacture of specialist fabricated access covers & frames. Our innovative approach to design & manufacture allow us to offer cover solutions for any chamber size, in any location.

Recessed access covers

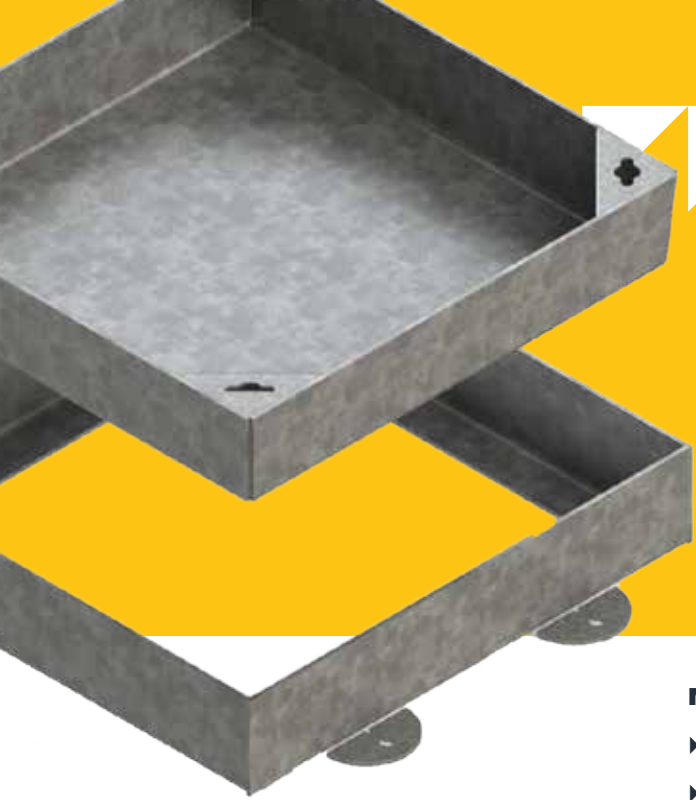
Block paviour	34
Block paviour - multiple leaf	36
Deep recessed tray	37
Recessed access cover multiple	39
Shallow recessed tray	40
Slide out block paviour	42

Solid top access covers

Solid top	44
Solid top - hidden hinge	48
Solid top - external hinge	52
Upstand	54

Accessories

Open mesh gratings and frames	55
-------------------------------	----



RECESSED BLOCK PAVIOUR

RECESSED COVER FOR PAVING INFILL

This range of recessed covers and frames are for use in areas of block paving where it is desirable to have continuity of surface finish. They are recessed 100mm for use with up to 80mm block paving and galvanised to BS EN ISO 1461. Non-standard sizes available on request.

MATERIAL OPTIONS

- ▶ Galvanised mild steel
- ▶ Stainless steel grade 304
- ▶ Stainless steel grade 316

GALVANISING OPTIONS

- ▶ 70 Micron (Standard)
- ▶ 100 Micron
- ▶ 140 Micron



Ventilated Pepperpot Product

Square to Round Block Paviour also available.

Key Attributes:

- ✓ Hot dip galvanised to BS EN ISO 1461
- ✓ Keyway fitting provision
- ✓ 100mm recess depth
- ✓ Recessed cover for block paving
- ✓ Manufactured from Mild Steel

Available Options:

- ▶ Pedestrian to 16 tonne (**see page 9 for more information**)
- ▶ Locking
- ▶ Threaded lifting points
- ▶ Service indicator badge
- ▶ Full external flange
- ▶ Safety grid
- ▶ Double Seal (including neoprene seal & locking screws)
- ▶ Ventilated
- ▶ Sealing Plates
- ▶ Stainless Steel Edge
- ▶ Alternative Tray Depth
- ▶ Square to round



CASE STUDY

JERSEY THE RIVER OF LIGHT



Channel Islands Co-operative Society



Pitt Street, Jersey



Bespoke Block Paviour Access Covers

Specialist steel access covers required as part of the artistic transformation of a city centre street in St Helier, Jersey have been designed and manufactured by civil engineering specialist Wrekin Products.

The area is an important entry point to the main shopping area of St. Helier and includes the public open space at Charing Cross. One of the highlights of the regeneration project is the Pitt Street art installation, 'The River of Light', funded by the Channel Islands Co-operative Society.

This installation, created by public art consultant Chris Clifford, involves paving slabs with different coloured stone rippling through them to mirror the pattern of running water. It also has text inscriptions carved into the paving capturing the history of St. Helier over the last 1000 years.



Bespoke access cover sizes and features, including one with a peephole, together with an enhanced level of galvanising (140 microns instead of 70 microns coating) due to the location's proximity to the coast, were specified. In addition, standard steel covers were provided for other areas in Charing Cross.

The covers needed to be discreet while at the same time allowing access to water, electricity and telecommunication services.

Wrekin worked closely with project architect Axis Mason, meeting with them to discuss specifications, and with the

The transformation of Pitt Street had to take account of practicalities, and steel covers were needed to provide aesthetically pleasing units for the bespoke paving slabs within it.

There was also a requirement for the supply of the chambers on top of which the covers were to sit. Wrekin designed and produced bespoke units and supplied the structural preformed chambers.



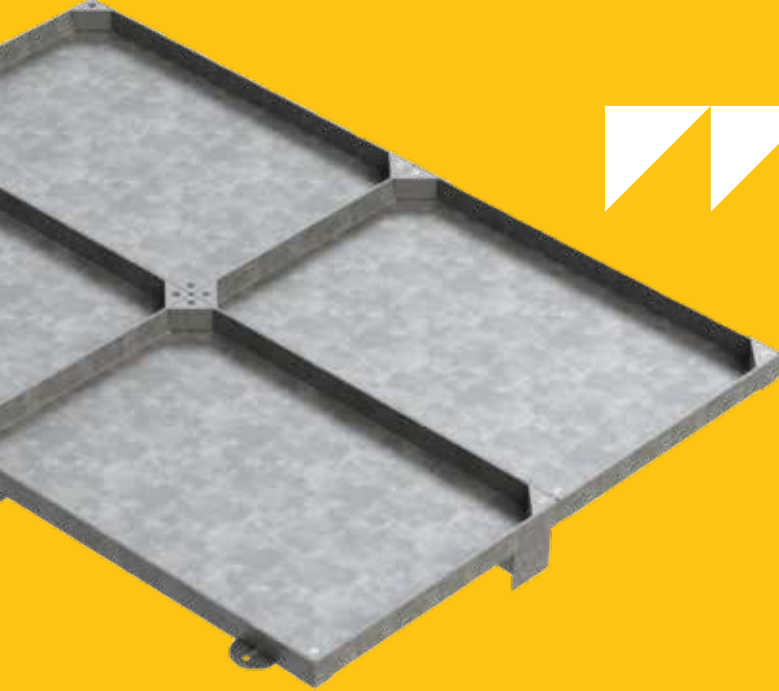
“This installation has enlivened what was once a dark, forgotten lane. It gives a real sense of arrival to a former dark and dingy place. It’s art, but it’s robust and practical and it has been a pleasure to work with Wrekin to push the boundaries of what a street can be.”

Leah Bliss
Axis Mason

merchant, Pentagon Building Supplies. This resulted in a total package solution for what has quickly become an iconic site.

Commenting on the project, Leah Bliss of Axis Mason said: “Pitt Street turned out to be a minefield of services, both live and redundant.

“This installation has enlivened what was once a dark, forgotten lane. It gives a real sense of arrival to a former dark and dingy place. It’s art, but it’s robust and practical and it has been a pleasure to work with Wrekin to push the boundaries of what a street can be.”



RECESSED BLOCK PAVIOUR MULTIPLE LEAF

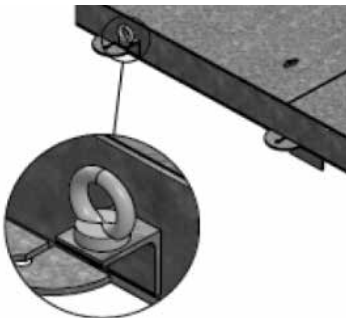
MULTIPLE RECESSED COVER FOR PAVING INFILL

Multiple paving infill covers and frames can be manufactured to suit a wide range of clear opening and load classes. They are tailored to suit each individual chamber, with drawings for approval supplied prior to manufacture. Construction is from heavy gauge mild steel with hot dip galvanised finish for corrosion protection. Supplied as standard with all necessary supporting steel work (beams removable for chamber access).

FALL PROTECTION OPTIONS

Hinged ladder safety grille	FP1
Hinged walk on safety grille	FP2
Split hinged pump access grille	FP3
Split hinged pump access walk on grille	FP4
Drop-in bar grille	FP5
Drop-in walk on grille	FP6

Orientation to be confirmed by client



Frame lifting point option

MATERIAL OPTIONS

- ▶ Galvanised mild steel.
- ▶ Additional galvanised coating to 100 microns.
- ▶ Additional galvanised coating to 140 microns.
- ▶ Stainless steel grade 304.
- ▶ Stainless steel grade 316.



Chamber sizes can be customised, with even or uneven dimensions to precisely match your unique project requirements. Covers and frames are crafted to accommodate a diverse spectrum of clear opening specifications and load classes, ensuring optimal functionality.

Key Attributes:

- ✓ Recess depth to suit floor finish
- ✓ Tapered cover sides for ease of removal
- ✓ Hot dip galvanised to BS EN ISO 1461
- ✓ Supplied with removable support beams
- ✓ Wide range of load classes
- ✓ Manufactured from heavy gauge mild steel

Available Options:

- ▶ Pedestrian to 16 tonne (see page 9 for more information)
- ▶ Sealed against odour egress / water ingress.
- ▶ Threaded eyes for machine removal.
- ▶ Locking screws.
- ▶ Full frame flange.
- ▶ Service indicator badge.
- ▶ Fall protection grilles (see table).
- ▶ Cover peephole for spindle access.
- ▶ Ventilated lids.
- ▶ Frame lifting points for handling/installation.



DEEP RECESSED TRAY

HEAVY DUTY RECESSED COVER

These covers and frames are suitable for use in heavy duty environments, such as areas where lorries and forklift traffic operate. They can be fully filled with concrete or partially filled with concrete and an alternative floor finish added on top, such as tarmac or resin bound gravel. The covers come complete with locking screws and neoprene seals to provide an odour egress / water ingress resistant unit.

Key Attributes:

- ✓ Reinforced bars in recess
- ✓ Tapered covers sides for ease of removal
- ✓ 11.5 tonne slow moving wheel load
- ✓ Locking screws
- ✓ Neoprene seals
- ✓ Hot dip galvanised to BS EN ISO 1461
- ✓ Manufactured from heavy gauge mild steel



Four-part with standard keyways and barrel locking points



Paviour Sealed Locked Bars in Base Keyway



M10 Lifting Keyway



Barrel Lifting Tube



Stainless Steel Edge

MATERIAL OPTIONS

- ▶ Mild steel galvanised to BS EN ISO 1461
- ▶ Additional galvanised coating 100 microns
- ▶ Additional galvanised coating to 140 microns
- ▶ Stainless steel grade 304
- ▶ Stainless steel grade 316
- ▶ Stainless steel edged (grade 304 only)

Available Options:

- ▶ Service indicator badge
- ▶ Alternative recess depths
- ▶ Bespoke sizes, including multiple lids
- ▶ Alternative loadings
- ▶ Full frame flange
- ▶ Threaded lifting points
- ▶ Secondary sealing plate
- ▶ Square to round opening
- ▶ Restricted access opening



CASE STUDY

HATFIELD

SAVING TIME, MONEY AND WORRY

Inadequate installation can leave even the best new steelwork falling short on essential safety requirements. After assessing a problematic job raising questions in Hatfield, our bespoke steel team rescued an opening by providing the end-to-end steel service needed.

Our fabrication and installation manager, Richard Lovatt, worked with contractor Associated Asphalt after it identified a problem with steelwork on Comet Way in Hatfield, Hertfordshire. With poor installation apparent and potential failure looming, it was clear that the covers designed for HGVs were not supported by the necessary beam work.

After producing a report on the state of the previous installation, we made our recommendations to rectify the problems. Our solution involved removal of the old covers, the design and manufacture of two new covers, and installation to ensure a safe and secure end result fit for the intended operation. This end-to-end service offered the client cost and time savings, as well as the peace of mind that the entire works were completed by an experienced steel team.

Following collaboration with the client, the final specification for the two new access covers included:

- ▶ 2000 x 2000mm clear opening
- ▶ Galvanised mild steel
- ▶ Recessed for concrete or tarmac infill to match the surrounding road surface
- ▶ Six-part covers
- ▶ Four locking screws per lid with threaded lifting points for machine removal
- ▶ 11.5 tonne slow moving wheel loading (SMWL)



There were serious safety consequences at risk of becoming reality if the existing covers were to fail again, so above all else, we are pleased that we can put these worries to bed.

“We confidently explained the causes of the initial problem, convincing the client of our ability to manufacture and install the steelwork needed.



Associated Asphalt



The Galleria, Hatfield



Bespoke Deep Recessed Access Cover



The experience and high-quality workmanship repeatedly displayed by our site team make this achievable time and time again.

“The client was so pleased with the end-to-end service that our support has been requested on more steelwork reinstatement jobs, meaning we are yet to truly make our mark on the area.”



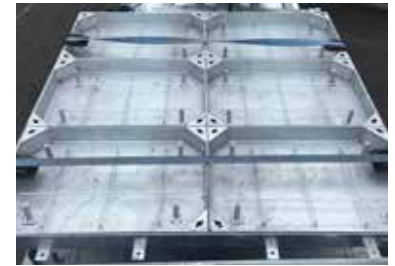
RECESSED ACCESS COVER MULTIPLE

MULTIPLE RECESSED COVERS FOR CONCRETE INFILL

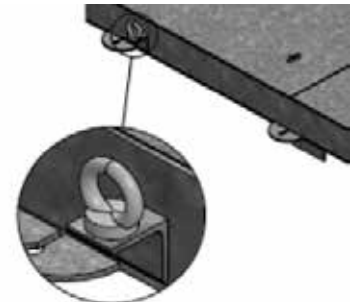
Multiple recessed covers and frames can be manufactured to suit a wide range of clear opening and load classes. They are tailored to suit each individual chamber, with drawings for approval supplied prior to manufacture. They are constructed from heavy gauge mild steel and hot dip galvanised for corrosion protection. Supplied as standard with all necessary supporting steel work (beams removable for chamber access).

Key Attributes:

- ✓ Recess depth to suit loading requirements / floor finish
- ✓ Reinforcing bars in tray
- ✓ Tapered cover sides for ease of removal
- ✓ Hot dip galvanised to BS EN ISO 1461
- ✓ Supplied with removable support beams
- ✓ Wide range of load classes
- ✓ Manufactured from heavy gauge mild steel



Cover locking screws



Frame lifting points

Available Options:

- ▶ Pedestrian to 16 tonne (see page 9 for more information)
- ▶ Sealed against odour egress / water ingress
- ▶ Barrel lifting eyes
- ▶ Threaded eyes for machine removal
- ▶ Locking screws
- ▶ Full frame flange
- ▶ Service indicator badge
- ▶ Fall protection grilles (see table)
- ▶ Cover peephole for spindle access
- ▶ Ventilated lids
- ▶ Frame lifting points for safe handling / installation
- ▶ Available in 55, 80 and 100mm depths

FALL PROTECTION OPTIONS

Hinged ladder safety grille	FP1
Hinged walk on safety grille	FP2
Split hinged pump access grille	FP3
Split hinged pump access walk on grille	FP4
Drop-in bar grille	FP5
Drop-in walk on grille	FP6

Orientation of fall protection systems need to be confirmed by client

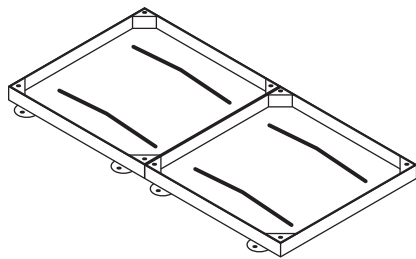
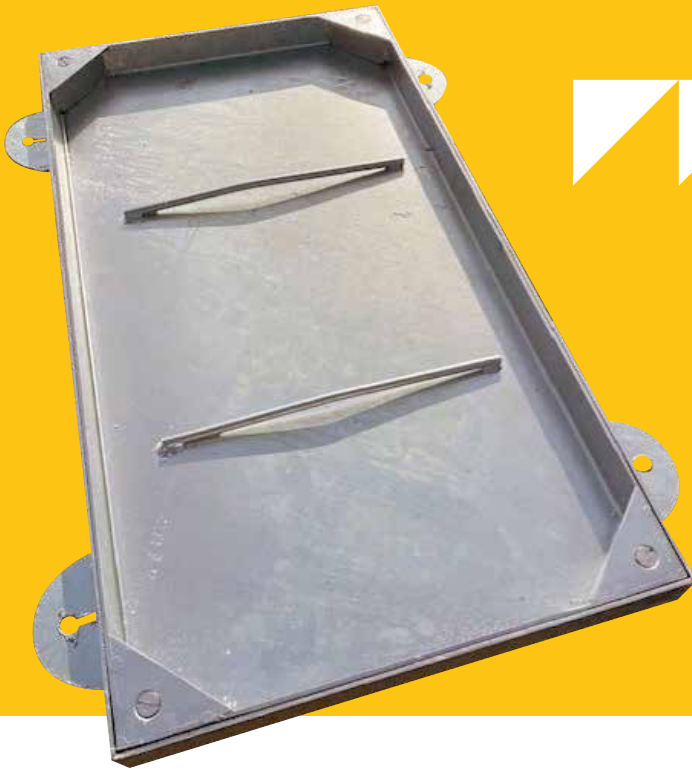
MATERIAL OPTIONS

- ▶ Galvanised mild steel
- ▶ Additional galvanised coating to 100 microns
- ▶ Additional galvanised coating to 140 microns
- ▶ Stainless steel grade 304
- ▶ Stainless steel grade 316

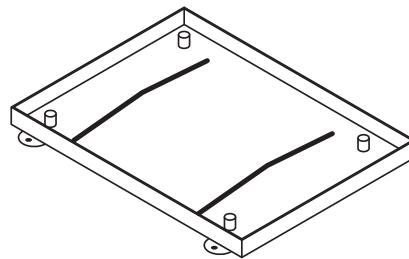
SHALLOW RECESSED TRAY

GALVANISED RECESSED COVER FOR CONCRETE INFILL

This range of recessed covers is designed to be in-filled with a range of floor finishes; including, screed, concrete, tiles, wood, composite material (e.g. resin bound gravel). They are available in a large range of sizes, including bespoke clear opening dimensions to suit individual requirements.



Twin cover supplied with removable centre support.



Cover with barrel lifting eyes, minimising cover visible in finished surface



Image shows barrel lifting eye option.

Key Attributes:

- ✓ Four locking screws
- ✓ Neoprene seals to provide odour egress / water ingress resistance
- ✓ Hot dip galvanised to BS EN ISO 1461
- ✓ Threaded lifting points protected by cover locking screws
- ✓ 55 mm recess depth
- ✓ Recessed cover for Concrete / Tile / Resin Bound Gravel
- ✓ Manufactured from Mild Steel

Available Options:

- ▶ 2.5 to 5 tonne (see page 9 for more information)
- ▶ Full external flange
- ▶ Brass edged (frame dimensions will vary from those shown)
- ▶ Safety grille
- ▶ Stainless steel edge (grade 304)
- ▶ Powder coating
- ▶ Barrel lifting eyes
- ▶ Secondary sealing plate
- ▶ Service indicator badge
- ▶ Alternative tray depth
- ▶ Square to round opening
- ▶ Security screw locking
- ▶ Multiple lids

MATERIAL OPTIONS

- ▶ Galvanised mild steel
- ▶ Stainless steel grade 304
- ▶ Stainless steel grade 316

LOCKING BOLT & LIFTING KEY DETAILS (THREADED LIFTING EYES)		STOCK CODE
Locking screws	M8 x 60 slotted stainless steel countersunk	
Unlocking key	Flat head screwdriver	
Lifting key	M10 threaded key	KEYS/M10



CASE STUDY

NOTTINGHAM THE STEEL OF NOTTINGHAM CASTLE

Nottingham Castle, a historically significant landmark in the city centre, underwent a three-year, £33m regeneration with the aim of becoming one of the country’s best attractions.

Part of the project included redeveloping the interior of the Ducal Palace, which contains the Temporary Exhibitions Gallery. To ensure the different exhibitions can shine without the space itself impacting the way visitors view them, special measures were included within the design. We were brought on board by the merchant working on the project, tasked with the brief of providing 11 bespoke stainless-steel manhole covers that are near invisible yet still functional.

Within two weeks we successfully designed the covers to include unusual circular lifting points – also known as barrel lifting points. There is skill required in the fitting of these because the individual undertaking the installation must drill and fit the infill into the lifting points. In this case, the infill material used was wood, adding another layer of individuality and aesthetically pleasing design.

The solution we provided helped the client quickly move forward with the project and achieve their vision of having the necessary infrastructure while being almost unnoticeable.



Nottingham City Council



Nottingham Castle



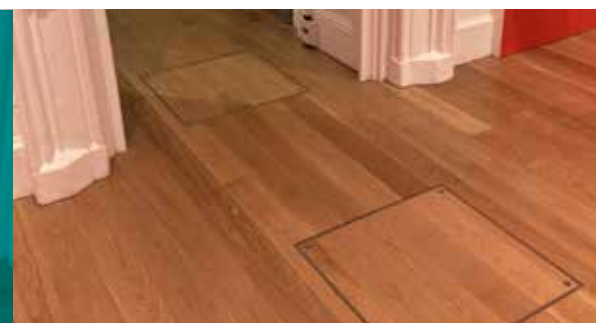
11 Bespoke Shallow Recessed Access Covers

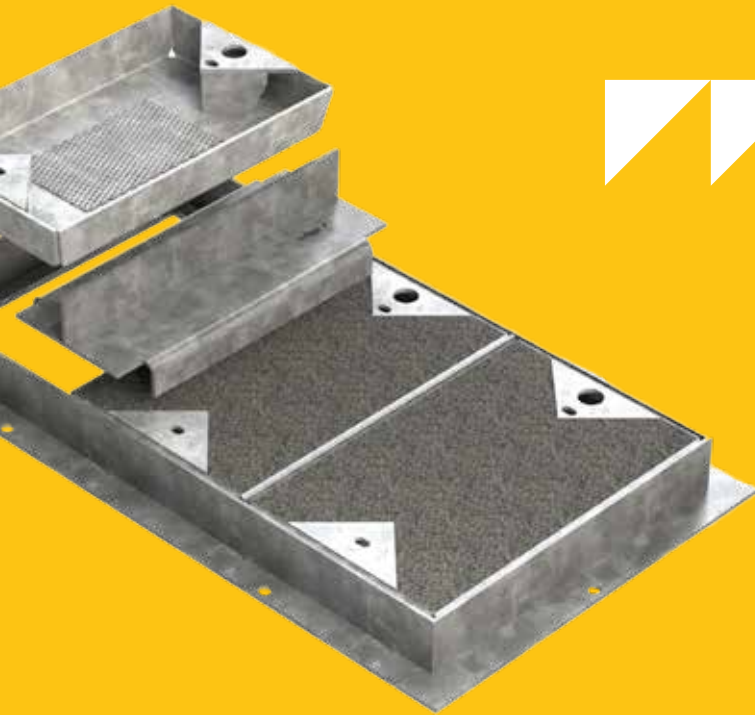
Paul Shaw, director of fabricated steel, said: “Our work for Nottingham Castle is a classic case of using our technical expertise to provide a bespoke solution for a client, where they would otherwise have to buy off the shelf and be unable to reach their desired outcome.

“When the enquiry came in, we knew exactly what was needed and how to achieve it. This meant that our first design proposal was approved and we could move straight onto turning our drawings into reality.

“The flexibility of our steel solutions means that merchants keep coming back to us for support with projects of different natures – whether that’s a new multi-million-pound residential development or a heritage site regeneration scheme like the one which took place at Nottingham Castle.”

Paul Shaw
Director of Fabricated Steel, Wrekin Products





SLIDE OUT BLOCK PAVIOUR

RECESSED COVER FOR PAVING INFILL

This range of covers and frames for paving infill is particularly suited to town centre developments where replacement of existing service covers is required to facilitate infill with blocks or stone to match the surrounding area. The slide out feature they provide allows easy access by a single operative. They are available in a large range of sizes including bespoke clear openings and cover depths.

Key Attributes:

- ✓ Hot dip galvanised to BS EN ISO 1461
- ✓ Manufactured from Mild Steel
- ✓ One man task – slide out covers
- ✓ Tapered covers sides for ease of removal
- ✓ Removable centre support bars for controlled slide out of covers
- ✓ To take 5 tonne or 11.5 tonne slow moving wheel loads
- ✓ Cover base mesh for resin fixing of paving

Available Options:

- ▶ 5 to 16 tonne (**see page 9 for more information**)
- ▶ Lock & Lift
- ▶ Service indicator badge
- ▶ Alternative recess depths
- ▶ Bespoke sizes
- ▶ Alternative loadings
- ▶ Full frame flange
- ▶ Variation of lifting points

MATERIAL OPTIONS

- ▶ Mild steel galvanised to BS EN ISO 1461
- ▶ 70 microns (Standard)
- ▶ Additional galv coating 100 microns
- ▶ Additional galv coating 140 microns
- ▶ Stainless steel grade 304
- ▶ Stainless steel grade 316



In Situ - Brierley Hill



In Situ - 5 part block



CASE STUDY

DUDLEY ACCELERATING TOWN CENTRE REGENERATION



Dudley Metropolitan
Borough Council



Brierley Hill



190 Steel Slide Out
Access Covers

Town centre developments can often start with challenging or unclear specifications, and this was no different in Dudley. Knowing that there is always a solution waiting to be discovered

Our bespoke steel team has helped Dudley Metropolitan Borough Council settle on the specification to meet its needs. 190 steel access covers later, we have made our mark on the future of Brierley Hill High Street in Dudley.

The West Midlands town has undertaken a multi-million-pound regeneration process, which includes improved amenities, transport links and access. Aiming to become a better place to live, work and shop, the busy town centre road is central to the new image of Dudley.



After discussion with the customer and some back and forth on intricacies like the slow-moving wheel load and Openreach-approved identification badging, the final drawings were submitted and approved on the same day.

Designed and supplied within the desired time frame of four months, our bespoke steel team contributed 190 access covers and frames with:

- ▶ Galvanised mild steel
- ▶ Recessed block paving infill
- ▶ Openreach approved design or bespoke sizes to suit the chambers in-situ

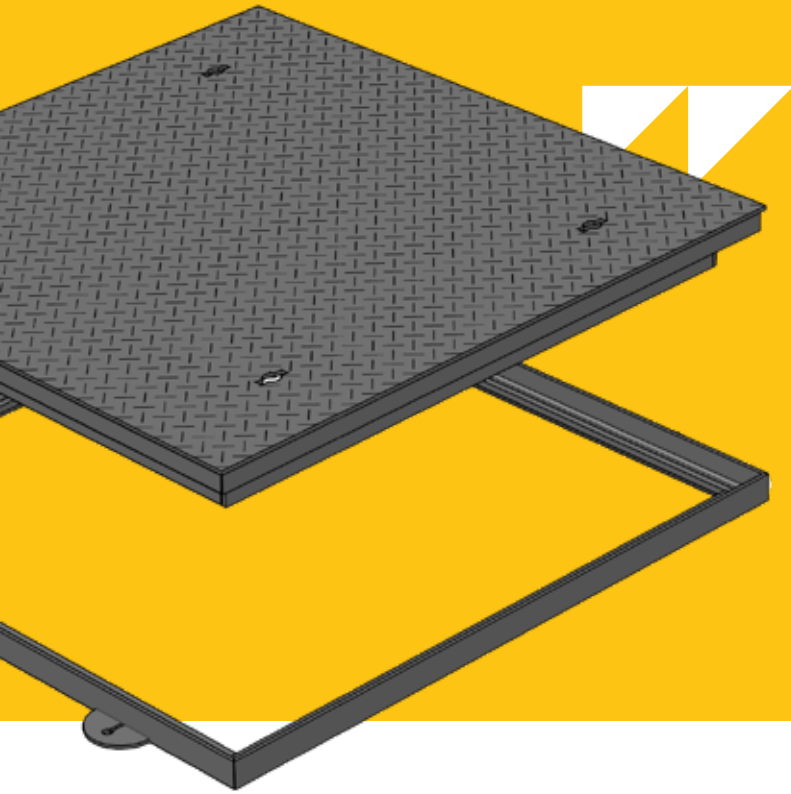
After making the project contractor aware of our steel manufacturing capabilities, we embarked on a mission to help the regeneration project progress as quickly as possible. Our market knowledge, collaboration skills and solution-focused mentality helped us to find a specification that met the clients' requirements and budget following a revision process.

The first enquiry we received listed the sizes required, but no defined specification. From here, we provided three possible types of product so that the customers' options and understanding of what we can offer remained open.

“Our attention to detail and willingness to make the changes needed to meet the client’s needs is where we triumphed on this project. It was an important opportunity for my team with **nearly 200 covers required**, but I had every confidence that our top-quality products and service would shine throughout the tender process”.

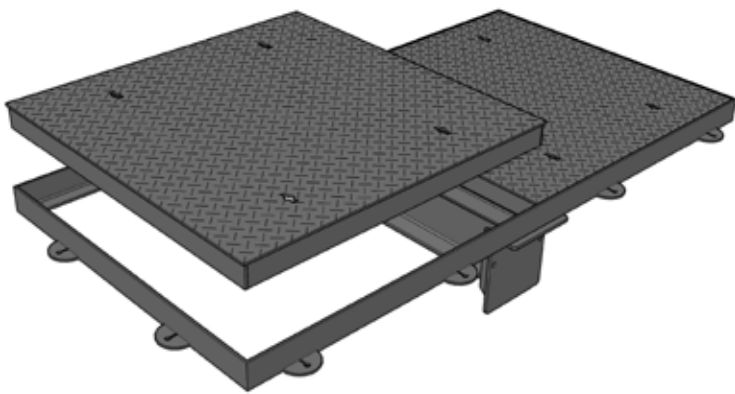
Paul Shaw,
Director of Fabricated Steel

“Town centre developments like the ongoing regeneration of Dudley are complex undertakings, with specifications that require detailed review. Our support in helping clients and contractors reach a point where vital products can be designed and purchased is often only a small part of a wider development, but the feedback we receive and relationships we have are evidence of the assurance we offer within a project team.”

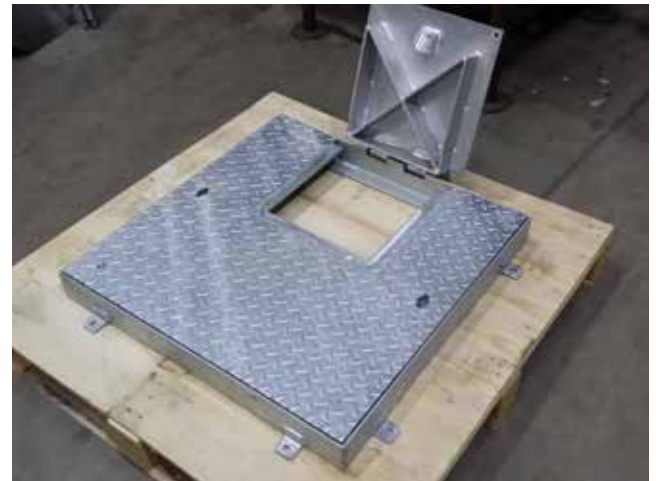


SOLID TOP LIFT OUT ACCESS COVERS

Our solid top covers and frames are manufactured specifically to customer orders and can accommodate any opening size up to 1000mm square with a single lid, and up to 2000mm x 1000mm with twin lids. Weight loadings ranging from pedestrian access to areas of goods vehicle operation can be accommodated, with frame depths at 40 mm, 75 mm & 100mm. Covers and frames are constructed from heavy gauge plate and sections, they are hot dip galvanised to BS EN ISO 1461 after fabrication to provide corrosion resistance. See below for loading options, frame depths and optional extras. Please consult our steel sales department for specific requirements.



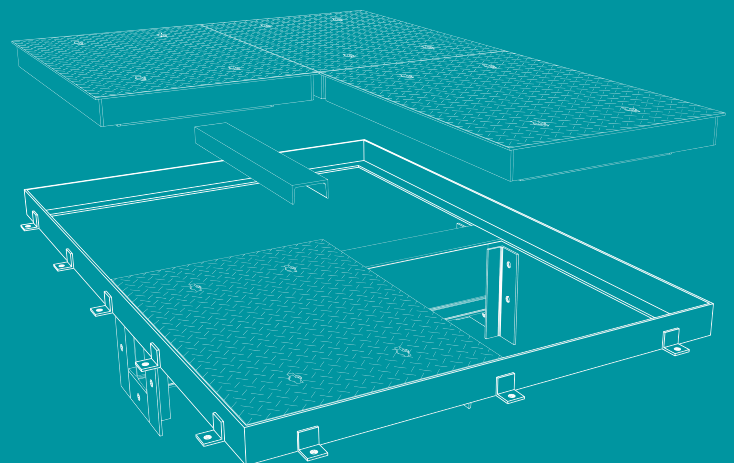
Available in 40 & 75 mm deep frame twin cover c/w removable centre beam & support pockets.



Bespoke cover with frame mounted hinged peephole for ease of operation by a single operative

SOLID TOP - MULTIPLE LIFT OUT ACCESS COVERS

Our Multiple solid top covers and frames can be manufactured to suit almost any chamber clear opening. Covers and frames are constructed from heavy gauge rolled steel plate and section and galvanised to BS EN ISO 1461 after fabrication. See below for available wheel loadings and cover options. Please consult our steel technical department for specific requirements.



Key Attributes:

- ✓ Manufactured from heavy gauge mild steel
- ✓ Hot dip galvanised to BS EN ISO 1461
- ✓ Chequer plate top surface
- ✓ Wide range of load classes
- ✓ Non-standard clear openings accommodated

Available Options:

- ▶ Pedestrian to 16 tonne (see page 9 for more information)
- ▶ Lock & Lift devices
- ▶ 2 or 4 screw locking
- ▶ Safety grids*
- ▶ Threaded lifting eyes
- ▶ Service indicator badge
- ▶ Fall protection grilles (see table)
- ▶ Cover peephole for spindle access
- ▶ Ventilated lid
- ▶ Badged*
- ▶ Plain seated (unsealed)
- ▶ Single seal
- ▶ Double seal
- ▶ Powder coating / special paint finishes
- ▶ Enhanced anti-slip coatings
- ▶ Stainless steel (grade 304)
- ▶ Available in 40, 75 and 100mm depths

*Available only for solid top - multiple

ALL PROTECTION FALL PROTECTION OPTIONS

Hinged ladder safety grille	FP1
Hinged walk on safety grille	FP2
Split hinged pump access grille	FP3
Split hinged pump access walk on grille	FP4
Drop-in bar grille	FP5
Drop-in walk on grille	FP6
Orientation of fall protection systems need to be confirmed by client	

MATERIAL OPTIONS

- ▶ Mild steel galvanised to BS EN ISO 1461
- ▶ Additional galvanised coating to 70 microns (standard)
- ▶ Additional galvanised coating to 100 microns
- ▶ Additional galvanised coating to 140 microns
- ▶ Stainless steel grade 304

LOCKING BOLT & LIFTING KEY DETAILS (STANDARD KEYWAY)		STOCK CODE
Locking screws	M8 socket cap	
Unlocking key	6mm hexagon key	
Lifting key	Heavy duty key	KEYSHEAVY

LOCKING BOLT & LIFTING KEY DETAILS (THREADED LIFTING EYES)		STOCK CODE
Locking screws	M8 slotted stainless steel countersunk	
Unlocking key	Flat head screwdriver	
Lifting key	M10 threaded lifting key	KEYS/M10



Heavy Duty Key - KEYSHEAVY



M10 Threaded Key - KEYS/M10



GLASGOW AIRPORT INVESTMENT AREA PROGRESS HINGED ON OUR SUPPORT



Wills Bros.



Glasgow



Bespoke Solid Top
Access Covers

The Glasgow Airport Investment Area (GAIA) is a large-scale infrastructure scheme underpinning development of Scotland's manufacturing innovation district.

There are several layers to the development including new roads, bridges, cycling routes and footpaths. Up against time and cost to deliver, contractor Wills Bros needed suppliers they could trust to meet the mark – and we offered exactly what was required.

Part of a larger £1.13bn Glasgow City Region City Deal, the GAIA project is set to improve commercial connections to multiple nearby business parks and will significantly stimulate economic growth in the region.

The contractor working hard to make the vision a reality required several high spec spring assisted steel access covers with integrated fall protection, as well as Unite and Highway covers fitted with removable safety grilles for fall protection.

Considering the time and cost limitations on the project, we produced several different options where savings could be achieved. We also discussed which covers were required first so that we could begin the manufacturing process and ensure the project programme was undisturbed.

Despite the limitations, we worked through a collaborative design process with Wills Bros, supplying almost ten different iterations of our covers and improving on the feedback every time to ensure the desired specification was perfect.

Many of the access covers required were too small to facilitate inside-hinges without blocking access to the chamber below. To navigate this issue, our steel team worked tirelessly to design a bespoke access cover featuring outward facing hinges – which was more difficult than imagined when ensuring health and safety standards were met. As the chambers were also different sizes, we provided differently sized access covers to meet individual requirements.

Rich Lovatt, Fabrication and Installation Manager at Wrekin, said: “It was an interesting project, providing us with many interesting design challenges to tackle. It was a great opportunity for us to flex our creative muscles when looking at solutions for the unique designs required. The contractor, Wills Bros, which we have a longstanding relationship with based on many positive experiences, appreciated when we showed we were willing to go back to the drawing board again and again until we created the perfect bespoke solution.

“Ultimately, we managed to turn the project around with a two-and-a-half-week lead time – which was impressive considering the products don't simply come off the shelf.”



“We managed to turn the project around with a two-and-a-half-week lead time – which was impressive considering the products don't simply come off the shelf.”

Rich Lovatt
Fabrication and Installation Manager at Wrekin



DEVON COUNTY COUNCIL CENTRE STAGE AT SIDMOUTH AMPHITHEATRE



Devon County Council



Sidmouth, Devon



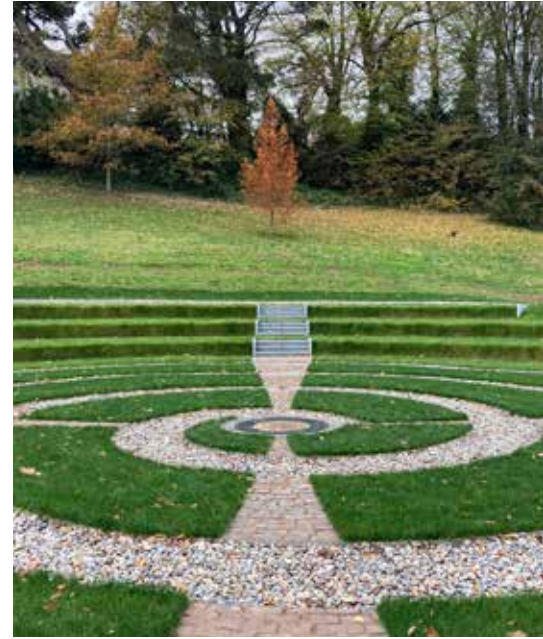
Vertical lift bespoke
Access Cover

A one-of-a-kind cover has become the focal point of a new flood storage area that doubles as an outdoor performance space in Sidmouth, Devon. The steel cover, which was created by Wrekin Products, forms an integral part of a significant flood alleviation scheme in the area. Laser cut with an intricate leaf pattern, the product was left ungalvanized meaning the surface would oxidise quickly due to the surrounding seawater environment.

The cover also features a unique opening mechanism, which was devised especially for the project, in order to allow a single operative to easily and safely lift the cover without causing damage to the surrounding bespoke stonework.

Paul Shaw, director of fabricated steel at Wrekin Products, said: “It was wonderful to work on something so different and to solve the challenges that this particular project faced. More often, we are finding that there is an increasing need for specialist expertise in the steel area both in terms of high functioning performance and aesthetic appeal.

The project was delivered for Devon County Council, designed by Jacobs, with South West Highways as the main contractor. Jacobs established the concept along with multiple design parameters, which Wrekin quickly developed and engineered the final product to fit in with the amphitheatre.



Paul Hargreaves, head of discipline, surface water management (UK & Europe) at Jacobs Engineering, said: “We’ve enjoyed working with Wrekin on this project and we have been impressed with the level of ingenuity shown. In particular, the opening mechanism has been very well received.

“When unlocked, the cover rises with little effort on a spring-loaded strut, before pivoting and spinning clear of the opening. What’s more, the design has multiple benefits including one-person operation. It is also theft-proof due to the locking mechanism and the ornate stonework will not be damaged during operation.”

These works are the first phase of the scheme to improve water drainage in the town, with the aim of reducing the flood risk to more than 100 properties.

The amphitheatre was officially opened in October by Councillor Jeff Trail, chair of Devon County Council. Other project partners included the Environment Agency, East Devon District Council and Sidmouth Town Council.

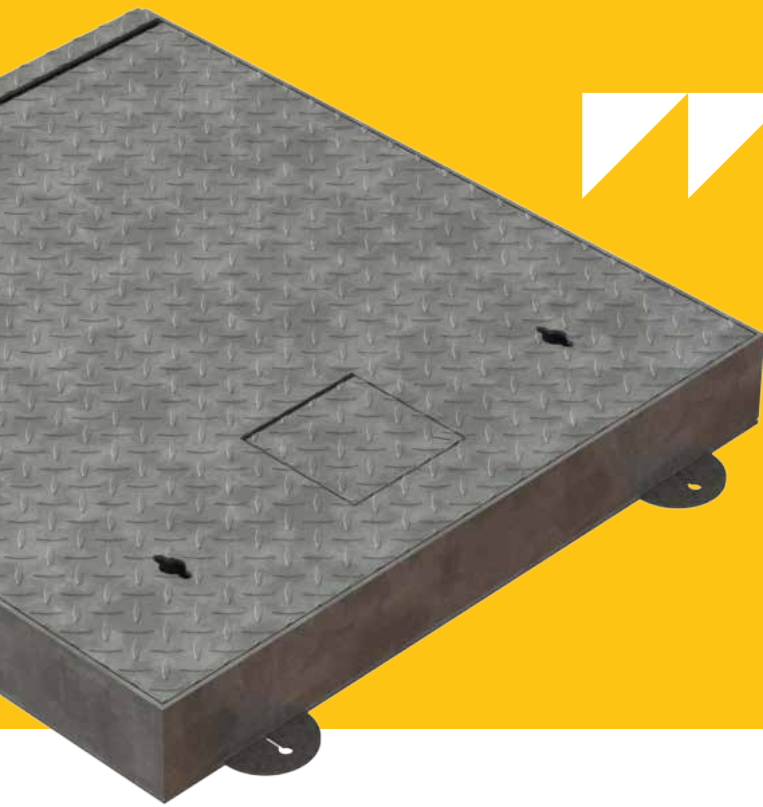
“This shift towards the need for high-quality finished covers plays to our strengths at Wrekin and we take pride in our ability to craft exceptional products like this.”

Paul Shaw
Director of Fabricated Steel, Wrekin Products



SOLID TOP - HIDDEN HINGE

HINGED ACCESS COVERS



Spring assisted covers are available to suit a wide range of clear opening sizes and load classes. They are constructed from heavy gauge mild steel and hot dip galvanised for corrosion protection. Supplied as standard with anti-tamper internal hinges, locking devices and safety retaining stay bars. Widely used on both wet and dry wells where ease of access is essential. Commonly supplied with fall protection grilles, including self-closing split pump through grilles for safer pump extraction. An extremely versatile cover with options available to suit virtually any situation.



Lid open showing stainless springs



Internal support beams are removable

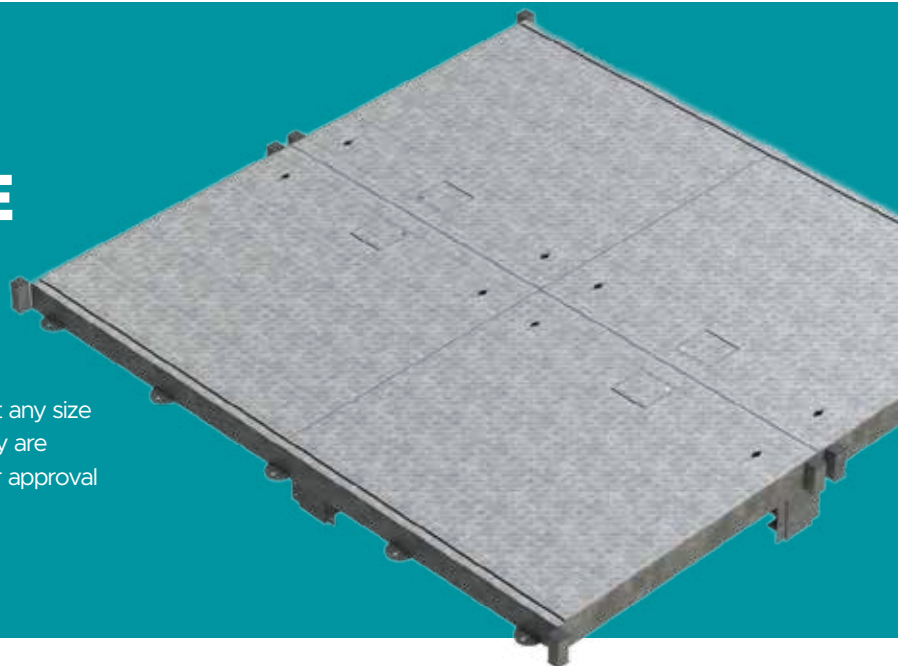


Showing FP2 fall protection

SOLID TOP - HIDDEN HINGE MULTIPLE

HINGED ACCESS COVERS

Multiple spring assisted covers are available to suit almost any size of clear opening and in a wide range of load classes. They are tailored to suit each individual chamber, with drawings for approval supplied prior to manufacture.



Key Attributes:

- ✓ Anti-tamper hidden hinges
- ✓ Spring assisted lift (stainless steel)
- ✓ Lock-lift devices
- ✓ Auto engage / manual release stay bar
- ✓ Supplied with removable support beams*
- ✓ Wide range of load classes
- ✓ Hot dip galvanised to BS EN ISO 1461
- ✓ Manufactured from heavy gauge mild steel
- ✓ Frame lifting points ease of safe installation

*Available only for solid top - hidden hinge multiple

Available Options:

- ▶ Pedestrian to 16 tonne (see page 9 for more information)
- ▶ Single or double seals
- ▶ Recessed hasp / staple to accept padlock
- ▶ Bespoke sizes, including multiple lids
- ▶ Choice of hinge positions
- ▶ Asymmetric lid arrangements if required
- ▶ Demountable barrier & storage systems
- ▶ Full frame flange
- ▶ Service indicator badge
- ▶ Fall protection grilles (see table)
- ▶ Cover peephole for spindle access
- ▶ Frame drain tube (internal or external)
- ▶ Ventilated lid
- ▶ Powder coating / special paint finishes
- ▶ Enhanced anti-slip coatings
- ▶ Danger warning signs

MATERIAL OPTIONS

- ▶ Mild steel galvanised to BS EN ISO 1461
- ▶ Additional galvanised coating 100 microns
- ▶ Additional galvanised coating to 140 microns
- ▶ Stainless steel grade 304

FALL PROTECTION OPTIONS

Hinged ladder safety grille	FP1
Hinged walk on safety grille	FP2
Split hinged pump access grille	FP3
Split hinged pump access walk on grille	FP4
Drop-in bar grille	FP5
Drop-in walk on grille	FP6

Orientation of fall protection systems need to be confirmed by client





CASE
STUDY

HERRING BRIDGE END TO END BESPOKE STEEL INSTALLATION



BAM Farrans JV



Herring Bridge,
Great Yarmouth



Bespoke Solid Top
Access Covers

Norfolk County Council's third river crossing project in Great Yarmouth is one of the area's most significant infrastructure projects in years.

A significant part of the project involves an extensive upgrade to Norfolk's road network, linking the two sides of the river and making use of a five-exit roundabout to take on the bulk of the town's heavy traffic congestion. Our steel team was responsible for providing a bespoke solution for two failed manhole covers within an important network, which led to the first project completed by our dedicated installation team and a long-term fix.

After several weeks of dialogue, exchanging of expertise, engaging new suppliers and reviewing standards, a final design for the new covers was reached. This thorough and efficient process led to two bespoke steel access covers that were a significant upgrade on the former covers. The covers now meet the exact measurements and required specification, which includes:

- ▶ Hidden hinges
- ▶ Spring and gas ram assisted lift
- ▶ Lock and lift
- ▶ 16.5 tonne wheel load
- ▶ Solid top
- ▶ Neoprene seal
- ▶ 140-micron galvanised finish
- ▶ Special non-slip paint finish

BAM Farrans Joint Venture was appointed to the scheme to help realise plans for Herring Bridge to maximise investment, regeneration and economic growth opportunities in the town and wider borough.

Our involvement in the bridge across the River Yare started with a site visit following an enquiry about our steel services. Our fabrication and installation manager Richard Lovatt swiftly advised that two out of shape manhole covers and frames already in situ were not fit for purpose and in need of replacement, which would be no simple task. Despite carrying the load required above ground, there was no way to access the chambers below and removing the covers took significant manpower and machinery – which is not acceptable in an emergency. Once replaced, Anglian Water would be in a position to carry out cover maintenance and easily access the chambers below as originally intended.



While the manufacturing and handover would historically have been our final involvement in a project such as this, our participation in this scheme also included installation of the bespoke covers. By also fitting the specified solution, this marked a business first for us at Wrekin – with this part of the project smoothly completed by our new, expert Wrekin Steel Project Installation Team. Available to tier one contractors, our installation team provides an experienced, expert and convenient option for a more efficient end-to-end project solution.



“The covers provided by Wrekin perfectly meet our project needs and the installation service is a great new offering. Wrekin’s steel team is set to make life easier for others like they did for me.”

Chris Feeney
BAM Farrans Joint Venture



Chris Feeney, design co-ordinator at BAM Farrans Joint Venture, said: “The nature and scale of the third river crossing project meant that any setbacks were costly. Having an expert on the ground assessing our existing failed covers felt assuring – with the solution being determined as fast and accurately as possible.

“The covers provided by Wrekin perfectly meet our project needs and the installation service is a great new offering. Wrekin’s steel team is set to make life easier for others like they did for me.

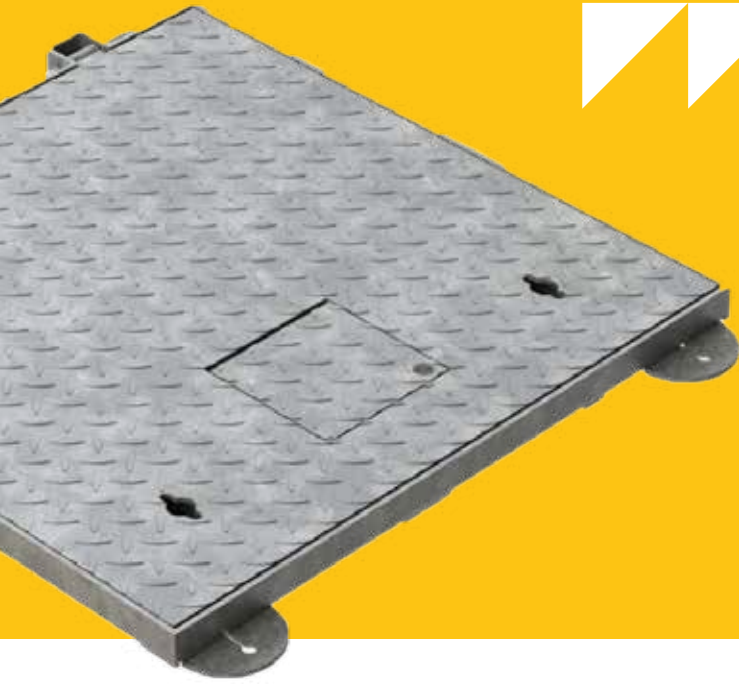
Richard Lovatt said: “Great Yarmouth’s infrastructure transformation and expansion is an important project for the region, and we’re pleased to have played a helpful part in it.

“We were able to provide a solution that achieved specification, as well as utilising our installation capabilities to ensure time critical delivery. We understand that our clients’ time is precious, so by being able to turn to us for a complete solution that includes bespoke and early steels specification, as well as installation support, saves time and provides peace of mind.

“Working closely with the client to ensure that we were synchronised, we became a vital element of its operations and were trusted to deliver. That was our goal and ultimately that was what we succeeded in achieving. Our involvement has been physically imprinted on the site and full cover traceability means the specification can be replicated or reviewed in the future as required, making the handover process and associated documentation as thorough as possible.”

“Great Yarmouth’s infrastructure transformation and expansion is an important project for the region, and we’re pleased to have played a helpful part in it.”

Richard Lovatt
Fabrication and Installation Manager



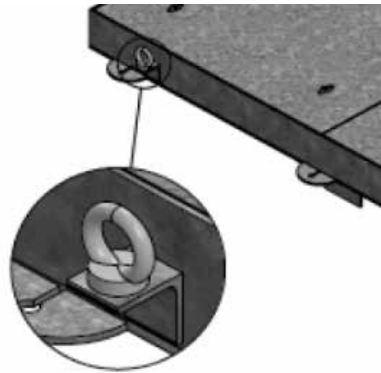
SOLID TOP - EXTERNAL HINGE

HINGED ACCESS COVERS

External hinged, spring assisted covers are available to suit a wide range of clear opening sizes and load classes. They are constructed from heavy gauge mild steel and hot dip galvanised or corrosion protection. Supplied as standard with externally hinged lids, locking devices and safety retaining stay bars. An economic solution where ease of access is essential, offering one man operation whilst remaining within lifting guidelines. A versatile cover with many options and variations available to suit most access situations.



Typical beam & support pocket detail



Frame lifting points

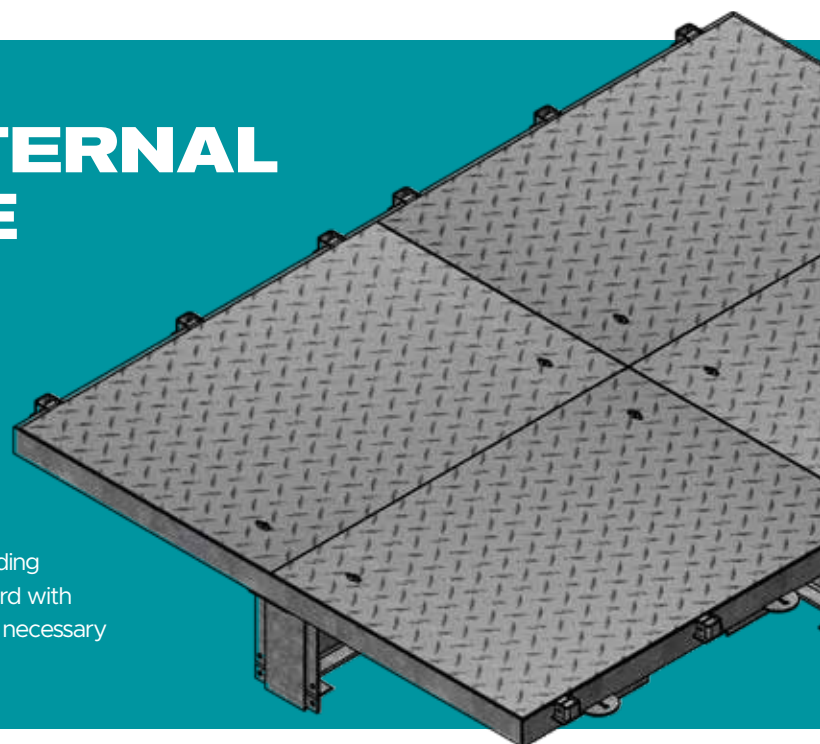


Twin lid with padlock facility

SOLID TOP - EXTERNAL HINGE MULTIPLE

HINGED ACCESS COVERS

Multiple spring assisted covers are available to suit almost any size of clear opening and in a wide range of load classes. They are tailored to suit each individual chamber, with drawings for approval supplied prior to manufacture. They are constructed from heavy gauge mild steel and hot dip galvanised for corrosion protection. Providing an economic, multiple lid solution for larger chamber openings, whilst still providing access within the recommended lifting limits. Supplied as standard with external hinges, locking devices, safety retaining stay bars and all necessary supporting steel work.



Key Attributes:

- ✓ External hinges
- ✓ Spring assisted lift (stainless steel)
- ✓ Lock-lift devices
- ✓ Supplied with removable support beams*
- ✓ Auto engage / manual release stay bar
- ✓ Wide range of load classes
- ✓ Manufactured from heavy gauge mild steel
- ✓ Hot dip galvanised to BS EN ISO 1461
- ✓ Frame lifting points ease of safe installation*

*Available only for solid top - external hinge multiple

Available Options:

- ▶ Pedestrian to 16 tonne (see page 9 for more information)
- ▶ Single or double seals
- ▶ Recessed hasp / staple to accept padlock
- ▶ Choice of hinge positions
- ▶ Asymmetric lid arrangements if required
- ▶ Demountable barrier & storage systems
- ▶ Full frame flange
- ▶ Service indicator badge
- ▶ Fall protection grilles (see table)
- ▶ Cover peephole for spindle access
- ▶ Frame drain tube (internal or external)
- ▶ Ventilated lid
- ▶ Powder coating / special pain finishes
- ▶ Enhances anti-slip coatings
- ▶ Danger warning signs



Bespoke cover installation



New cover & frame awaiting dispatch



Covers incorporate seals and recessed padlock facility

ALL PROTECTION FALL PROTECTION OPTIONS

Hinged ladder safety grille	FP1
Hinged walk on safety grille	FP2
Split hinged pump access grille	FP3
Split hinged pump access walk on grille	FP4
Drop-in bar grille	FP5
Drop-in walk on grille	FP6

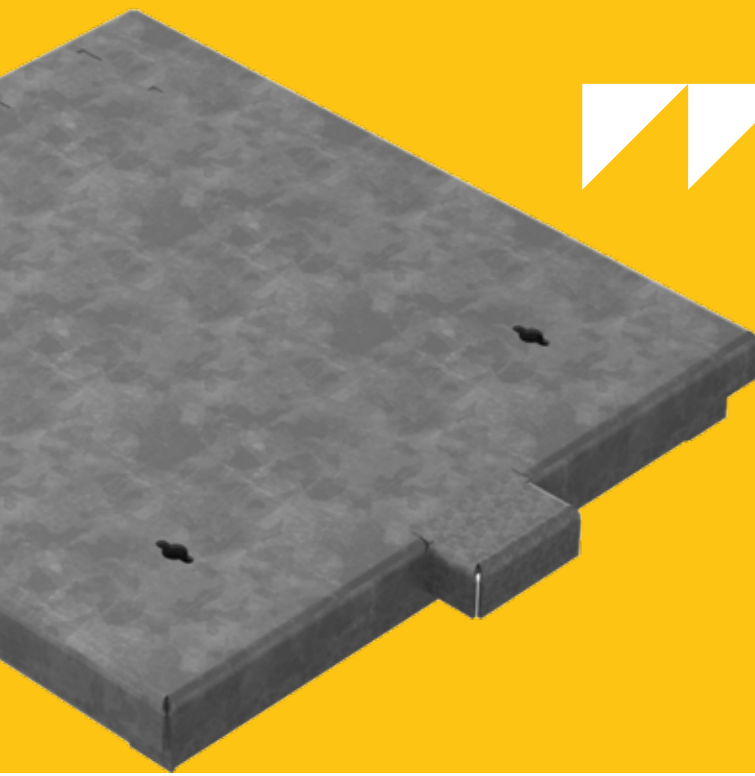
Orientation of fall protection systems need to be confirmed by client

MATERIAL OPTIONS

- ▶ Mild steel galvanised to BS EN ISO 1461
- ▶ Additional galvanised coating 100 microns
- ▶ Additional galvanised coating to 140 microns
- ▶ Stainless steel grade 304

All products from this range are designed specifically to customer requirements, with manufacturing drawings issued for approval prior to manufacture.

Due to the diversity in frame designs we do not publish generic sizes for this range.



UPSTAND COVERS & FRAMES

SURFACE MOUNTED WEATHERPROOF COVERS

Our surface mounting covers and frames are manufactured specifically to customer order and can accommodate any opening size up to 1000mm square with a single lid, up to 2000mm x 1000mm with twin lids and larger openings with the use of multiple lids. The raised profile of the installed unit provides flood protection to the top of the frame, the depth of protection being increased by mounting the unit on a pre-built concrete upstand.

Key Attributes:

- ✓ Manufactured from heavy gauge mild steel
- ✓ Hot dip galvanised to BS EN ISO 1461
- ✓ Hinged cover
- ✓ Self-engaging hold open stay bar
- ✓ Spring assisted lift
- ✓ Surface mounting frame
- ✓ Internally protected frame fixing holes
- ✓ Protected padlock facility
- ✓ Weatherproof
- ✓ Simple installation

MATERIAL OPTIONS

- ▶ Mild steel galvanised to BS EN ISO 1461
- ▶ Mild steel galvanised to BS EN ISO 1461
- ▶ Additional galvanised coating to 140 and 100 microns
- ▶ Stainless steel grade 304
- ▶ Stainless steel grade 316

Available Options:

- ▶ Neoprene sealed
- ▶ Ventilated frame with insect proof mesh
- ▶ Lifting handles
- ▶ Service indicator badge
- ▶ Fall protection grilles (see table)
- ▶ Cover peephole for spindle access
- ▶ Plain or chequer plate cover
- ▶ Special coating e.g. slip resistant, powder coating

Optional ventilation via the frame provides internal pressure release whilst still retaining the weatherproof capability of the cover, often employed on underground reservoirs and bio-mass fuel stores.

Standard features include a:

- ▶ Hold open safety stay
- ▶ Spring assisted lift for single person operation
- ▶ Shroud protected hasp & staple padlock facility.

FALL PROTECTION OPTIONS

Hinged ladder safety grille	FP1
Hinged walk on safety grille	FP2
Split hinged pump access grille	FP3
Split hinged pump access walk on grille	FP4
Drop-in bar grille	FP5
Drop-in walk on grille	FP6

Orientation of fall protection systems need to be confirmed by client



Padlock & shroud from below



OPEN MESH GRATINGS AND FRAMES

Our fabricated hinged open mesh flooring are an economical and safe solution for a wide range of industrial and commercial applications, e.g. platforms, walkways, staircases, racking, fencing and offshore modules.

Key Attributes:

- ✓ Hot dip galvanised to BS EN:ISO 1461
- ✓ Manufactured from mild steel
- ✓ Cut to customers requirements
- ✓ Pedestrian loading

Standard Options:

- ▶ Locking screws
- ▶ Hasp / staple for padlock
- ▶ Removable access point
- ▶ Cut outs for valve spindles / cables
- ▶ Hot dip galvanised to BS EN ISO 1461
- ▶ Hinged

Bespoke Options:

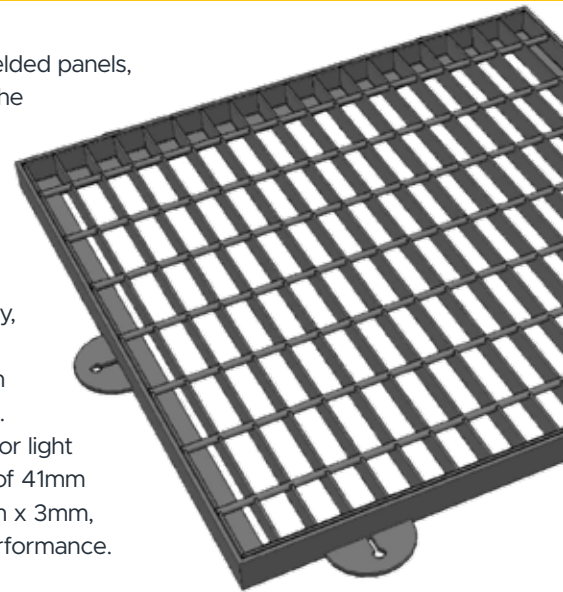
- ▶ Bespoke mesh
- ▶ Heavier loading available

GALVANISING OPTIONS

- ▶ 70 Micron (Standard)
- ▶ 100 Micron
- ▶ 140 Micron

Constructed from standard forge welded panels, undergoes precise cutting to meet the customer's bespoke requirements. Each piece is fully edged and securely supported within a substantial angle frame, complete with robust external fixing lugs.

This process ensures durability, safety, and ease of installation, providing a reliable and efficient flooring solution tailored to our clients' specific needs. The standard material specification for light duty products includes a mesh size of 41mm x 100mm and bars measuring 30mm x 3mm, ensuring a high-quality finish and performance.





WREKIN

All information in this brochure is subject to change without notice. While efforts have been made to make this brochure helpful and accurate, Wrekin Products Ltd. does not warrant the accuracy of information obtained from this brochure. Where errors or omission are brought to the attention of Wrekin, amendments will be made as quickly as possible.



Tel. 01543 440 440
Fax. 01543 440 444
Email. sales@wrekinproducts.com

wrekinproducts.com

Wrekin Products Limited.
Unit 1a, Europa Way
Britannia Enterprise Park
Lichfield, Staffordshire
WS14 9TZ

